



**PHILIPS**

Ultrasound

# Clinical excellence and streamlined care

Philips Sparq point-of-care ultrasound system



# Sparq

easy to experience

Breakthrough technology should not make your life more complex. Quite the opposite. It should remove the complexities that create barriers to doing what matters most: providing the best care possible for your patients at the point of care, including critical care, emergency medicine, regional anesthesia and pain.





With Sparq, nothing gets in the way of achieving a healthy balance of streamlined workflow and clinical excellence.

Sparq delivers. By providing a new ultrasound experience, Sparq makes scanning and interpreting quality ultrasound images at the point of care as simple as possible, giving you more time to focus on your patients. The unique user interface, intelligent automation and outstanding image quality combine to make the system easy to learn and easy to use.



Simplicity mode – ON



Simplicity mode – OFF

# A uniquely simplified ultrasound system

## Intuitive operation

The simplicity mode on the Sparq system presents only the ultrasound functions that you use most often. An intuitive dynamic interface adjusts as you interact with the control panel. The AutoSCAN feature automatically identifies tissue types and continuously adjusts image gain.

The exam dashboard seamlessly walks you through the steps needed to begin an exam. A temporary ID feature assigns a unique, temporary number to each unidentified patient, allowing you to immediately start scanning.

## Guided workflow for customizable exams

SmartExam provides on-screen guided workflow for fully customizable exam protocols while automating system functions to increase consistency.

## Streamlined analysis and reporting

When the exam is complete, comprehensive tools aid analysis and reporting. Wireless DICOM networking capabilities make it easy to share and archive images and reports.

## Remote reporting – Telexy Qpath

Remote reporting\* provides remote access to the Telexy Qpath\*\* POCUS workflow solution. This feature allows clinicians to interact with the ultrasound images and Qpath worksheets directly from Sparq. The ability to complete and approve ultrasound exam reports at the point of care uniquely enhances workflow.

## The gold standard for security

Philips recognizes the importance of securing your ultrasound system and protecting your patient data. The security feature on Sparq is a defense-in-depth strategy that comprises five layers: firewall, operating system hardening, malware protection, access controls and patient data encryption. Each of these layers plays an important role in helping you thwart hackers, defend against malware and prevent unauthorized access.

\* Remote reporting is only available with Telexy Qpath and is trademarked as Qview.

\*\* Qpath is a trademark of Telexy Healthcare Inc.

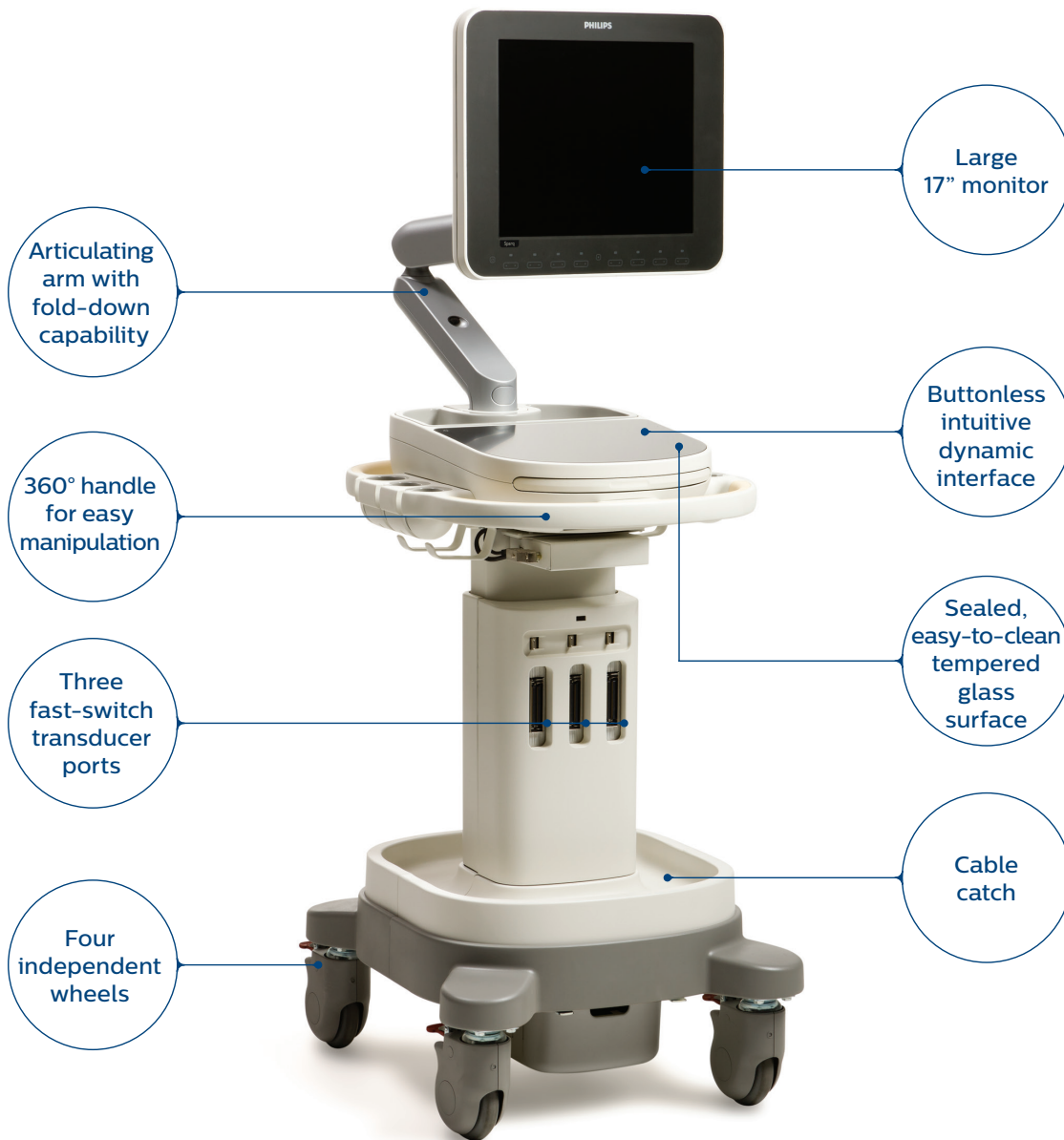


# Designed for **your environment**



Easy clip, our innovative cable management solution, keeps cables tangle-free and reduces damage while decreasing cable strain.

Sparq revolutionizes the user experience at the point of care



The ergonomic design and small footprint make it easy to position even in the most constrained clinical environments. For scanning comfort, the clinician can independently adjust the height of the system as well as the height of the monitor. To facilitate easy viewing, the large 17-inch monitor with automatic ambient light compensation is on an articulating arm.

The sealed, tempered glass control panel facilitates easy cleaning and disinfecting.

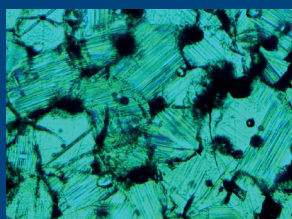
Sparq features a long battery life that provides mobility and access at the bedside. The Sleep Mode saves battery power and provides "instant on" when needed.

# Increased confidence for **point-of-care** ultrasound

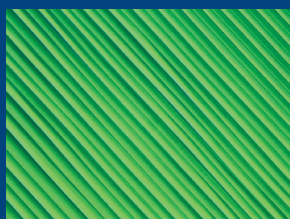
The power of Philips imaging for technically difficult patients

Sparq includes Philips proven imaging technologies designed to provide outstanding image quality: SonoCT significantly reduces many of the artifacts that are inherent in conventional ultrasound and XRES creates images virtually free from noise.

The exceptional performance of PureWave transducer technology results in improved diagnostic confidence, especially on the technically difficult patients who are becoming more prevalent in practice. PureWave transducer technology is now available on three Sparq transducers: C5-1, S5-1 and X7-2t.



Conventional (x800)



PureWave (x800)

The pure, uniform crystals of PureWave are **85%** more efficient than conventional piezoelectric material, resulting in exceptional performance.



## **Advances amazing imaging detail and penetration**

Philips PureWave crystal technology represents the biggest breakthrough in piezoelectric transducer material in over 40 years. This technology allows a single transducer to achieve superb penetration even in technically difficult patients, while maintaining excellent detail resolution and flow sensitivity.





# Easy procedure guidance



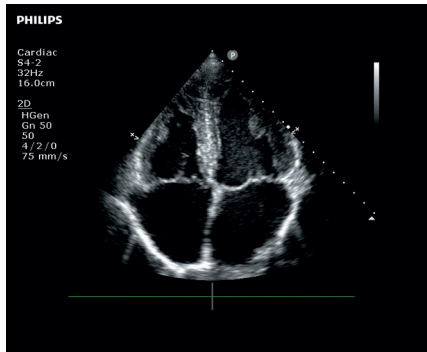
The L12-4 and C6-2 transducers have a centerline mark that corresponds to the centerline on the image to make it easy to conduct out-of-plane procedures.

Sparq features needle visualization, a technology that enhances the presentation of the needle without degrading the image, facilitating quick needle guidance to the anatomical target.

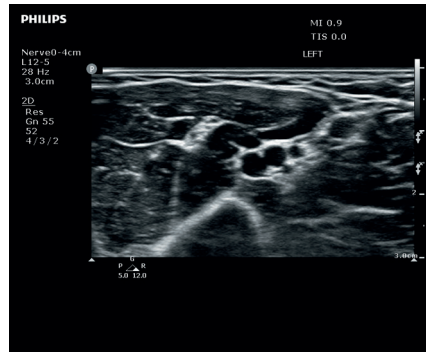
The system facilitates ultrasound guidance for central venous or peripheral vascular access, nerve blocks for pain management and joint aspiration procedures.



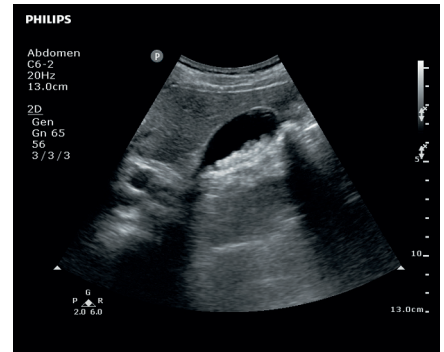
# Philips **exceptional** image quality



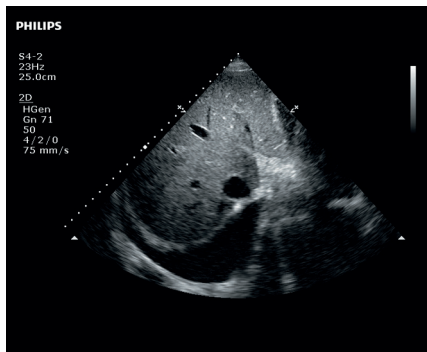
Apical four-chamber



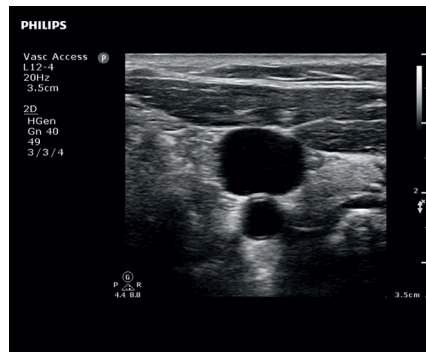
Musculocutaneous Nerve (MCN)



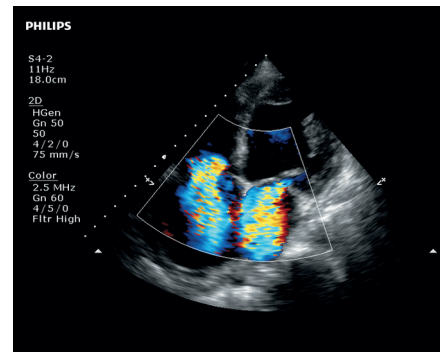
Gallstones



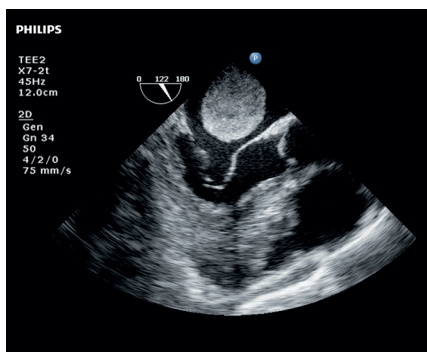
RUQ – fluid noted posterior to the liver



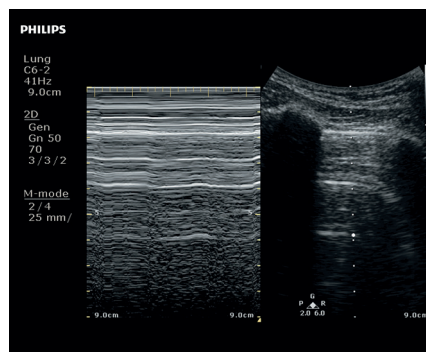
IJ and carotid



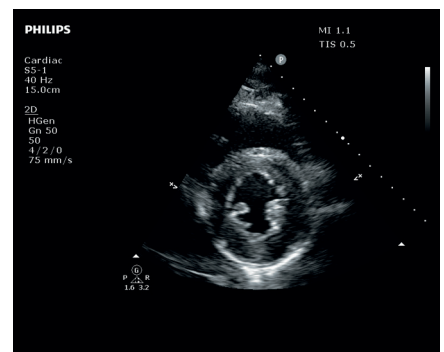
Apical four-chamber



TEE of an atrial myxoma



M-mode and 2D side-by-side



Parasternal short axis LV



# A wide range of transducers and clinical applications

## Sparq clinical applications

	Critical care	Regional anesthesia and pain medicine	Emergency medicine
Abdomen	•	•	•
Cardiac and TEE	•	•	•
Focused assessment with sonography for trauma (FAST)	•	•	•
Lung	•	•	•
Musculoskeletal (includes superficial)	•	•	•
Vascular access	•	•	•
Nerve	•	•	•
Ocular	•		•
Pelvic (including bladder and OB)	•		•
Spine		•	•
Transcranial Doppler (TCD)	•		•
Vascular (venous and arterial)	•		•
Vascular access	•	•	•

The Sparq family of transducers includes the C5-1 PureWave, C6-2, S4-2, L12-4, L12-5, L15-7io, C9-4v, X7-2t PureWave and S5-1 PureWave.





# Count on us as your patients count on you

The value of a Philips ultrasound system extends far beyond technology. With every Sparq system, you get access to our award-winning service organization,\* competitive financing and educational tools that help you get the most out of your system.\*\*

## **ISSL technology**

This industry-standard protocol meets global privacy standards and provides a safe and secure connection to the Philips remote services network using your existing Internet access point.

\* Philips is rated number one in overall service performance for ultrasound for 23 consecutive years in the annual IMV ServiceTrak survey in the USA.  
\*\* Optional. Not all services available in all geographies; contact your Philips representative for more information. May require service contract.



## Always there, always on

We work as one with your team to keep your Sparq system running smoothly.

### **Remote service capabilities maximize efficiency**

Easy, rapid technical and clinical support through remote desktop enables a virtual visit with a Philips expert. If you prefer to keep your know-how in-house, the OmniSphere Remote Technical Connect application\* allows your BioMed team remote access to Philips systems on your network so that you can have remote service capabilities your way.

### **Proactive monitoring solutions maximize uptime**

Philips proactive monitoring increases system availability by predicting potential system disruptions and proactively acting on them, letting you focus on what is most important – your patients.

### **Immediate support request at your fingertips**

The support request button allows you to enter a request directly from the control panel, for a fast and convenient communication mechanism with Philips experts without leaving your patient, minimizing workflow interruption.

### **On-cart transducer test provides confidence in your transducer quality**

On-cart transducer test provides a non-phantom method to test Sparq transducers at any time, giving you confidence in your diagnostic information.

## Sharing risk, increasing the return on your investment

Partner with us to maximize utilization and uptime of your Sparq system.

### **Utilization reports for confident decision-making**

Data intelligence tools can help you make informed decisions to improve workflow, deliver quality patient care and decrease the total cost of ownership. The on-board utilization tool provides individual transducer usage data and the ability to sort by exam type. The OmniSphere Utilization Optimizer takes this a step further by providing easy-to-use charts and graphs for all of your applicable networked Philips systems.\*

## Understanding your needs, designed for you

Our flexible RightFit service agreements, education offerings and innovative financing solutions can be adapted to meet your needs and strategic priorities.

- **Xtend Service Coverage:** lets you choose additional service coverage for your ultrasound equipment at the time of purchase to more easily calculate your total cost of ownership.
- **Clinical education solutions:** comprehensive, clinically relevant courses, programs and learning paths designed to help you improve operational efficiency and enhance patient care.

## Defense in depth

Sparq offers a defense-in-depth strategy, implementing a suite of security features designed to help clinical IT professionals and healthcare facilities provide additional patient data privacy and virus protection, as well as protection from unauthorized access via the ultrasound systems on hospital networks.

Business optimization tools such as OmniSphere allow you to use the power of data and connectivity to generate actionable insights and enhance productivity to improve your return on investment.

\* Check with your Philips representative for system compatibility.

