



PHILIPS

Ultrasound


Affiniti 30

It understands your everyday

Philips Affiniti 30 ultrasound system for women's health care

Designed for **balance**

You need to go above and beyond for your patients in less time, with fewer resources, and a high patient volume.

A photograph of two women in a clinical setting. The woman on the left is wearing a white lab coat over a purple button-down shirt and has a name tag that reads 'Susan Shackelton' from 'Essex Memorial Hospital'. She is looking towards the woman on the right, who is wearing a purple top and has her back to the camera. The background is a blurred hospital hallway.

Designed to set you apart and help you stay ahead, the Philips Affiniti 30 ultrasound system delivers innovation that responds to the needs of a busy ultrasound practice.



To balance these many demands, you need diagnostic information quickly – but not at the expense of accuracy. You need advanced functionality – but not at the expense of ease of use. You need a system that is ergonomic – but built to last for the daily rigors of high patient volume.

Philips Affiniti 30 ultrasound system helps you achieve this balance.

It delivers outstanding image quality and advanced tools for all gestational ages and complex gynecological cases – in a system that is out-of-the-box usable. Engineered for efficiency and reliability and powered by Philips superb performance, it gets you the diagnostic images you need, quickly. Its intuitive design and walk-up usability help you provide elegant, efficient care – every day.

The Affiniti 30 ultrasound system was designed to work hard, without high costs. Total cost of ownership is kept low through energy-efficient technology, extensive reliability testing that enhances uptime, and a modular design that enables rapid repair, if needed.





Affiniti 30 provides superb image details and incorporates Philips innovative solutions.

Broadband transducers include the C6-2, C9-4v, L12-5, V6-2, and 3D9-3v for all types of obstetrical and gynecological exams.

Strain elastography to enhance diagnostic confidence

Elastography on Affiniti 30 for breast and gynecology ultrasound exams provides highly sensitive and specific information that can be used to visualize, record, and report on tissue stiffness parameters. Because there is no additional compression required, exam consistency and reproducibility are increased.

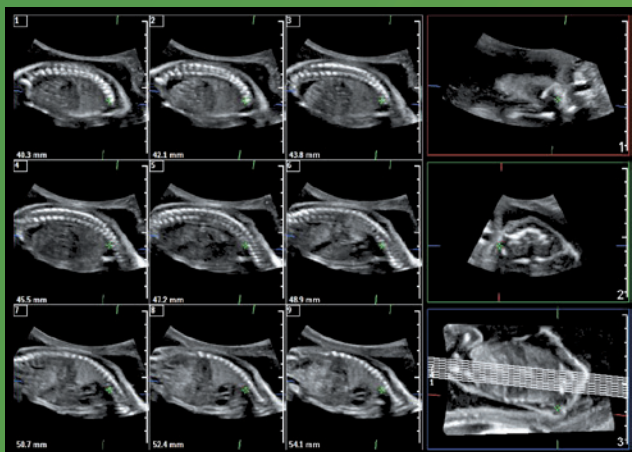
Advanced analysis and presentation

Q-Apps on Affiniti 30 allow advanced analysis and image presentations for volume imaging. iSlice supports the viewing of volume data sets in a tomographic view for better clinical understanding (for example uterine anomalies). QLAB GI 3DQ allows editing and performing everyday measurements on 3D ultrasound data sets.

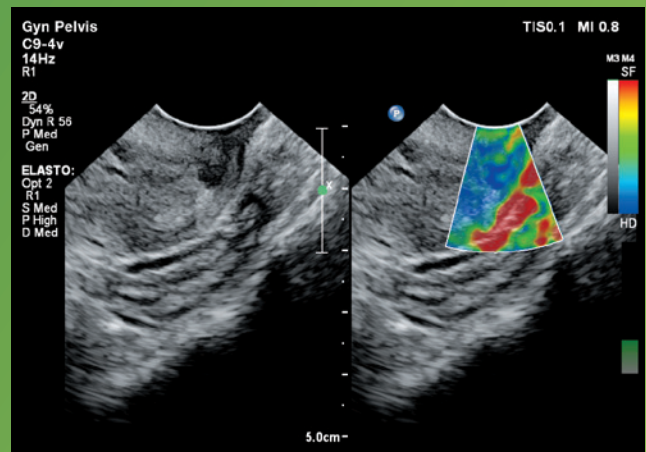
Automation tools save time

Philips Affiniti 30 is equipped with automation features that enhance workflow, decrease repetitive tasks, and enhance ease-of-use and consistency of exams among users. These include:

- **Real-time iSCAN (AutoSCAN):** Provides outstanding images in 2D, 3D, or 4D by automatically and continuously optimizing gain and TGC.
- **SmartExam guided workflow:** Increases consistency, reduces keystrokes, and decreases exam time by 30%-50% by automatically planning and processing application protocols. Fast and easy to customize, SmartExam provides consistent and accurate annotation, automatic mode switching, and missed view alerts to streamline exams.
- **Efficient fetal scanning:** Ability to create protocols for all trimesters and specialty exams such as trisomy 13 and 21.



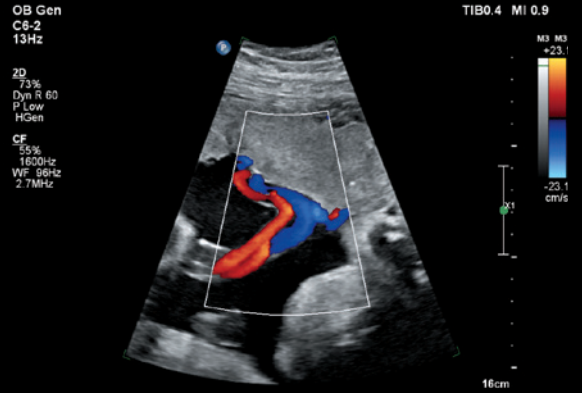
iSlice for fetal spine



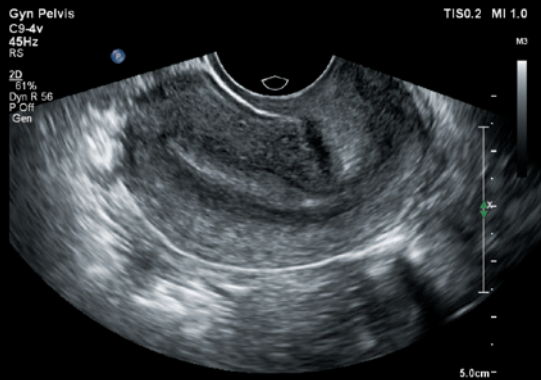
Strain elastography in cervix



Fetal spine



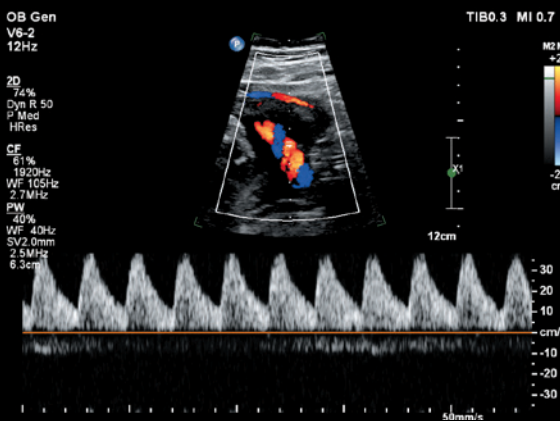
Umbilical vessels



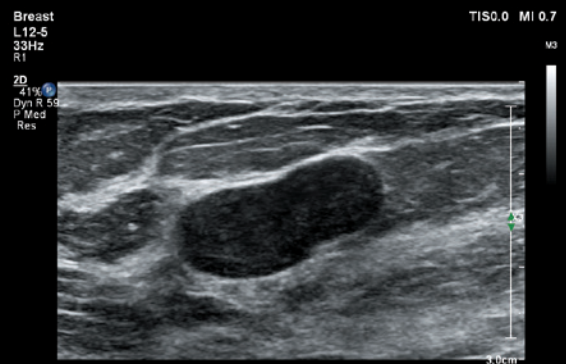
Long uterus



Septate uterus



Doppler umbilical artery



Breast lesion

Comfort meets **competence**

Philips leverages the experiences of its customers to design Affiniti 30 to address the challenges of scanning. We understand the reality of tight spaces, high patient volume, technically difficult patients, and time constraints, and we've designed the system with thoughtful details to help lighten your workload. With Philips Affiniti 30, comfort meets competence in a system that is easy to learn and use.



You won't notice it's there unless it's gone, but users have reported that easy clip, our innovative cable management solution, keeps cables tangle-free and reduces damage while decreasing cable strain to enhance comfort while scanning.

Ergonomic and elegant with walk-up usability, Affiniti 30 requires minimal training to learn.

Affiniti 30 consumes nearly

40%
less power

than its predecessor.*
It consumes less energy than a toaster and generates less heat, which can help you save on energy and cooling costs.



* HD15



Friendly design and library-quiet operation enhance patient comfort.

Walk-up usability

The intuitive, intelligently designed user interface and system architecture have been validated by studies that show that users with ultrasound experience require minimal training on system use to be able to complete an exam.¹

Reduced reach and button pushes

To enhance exam efficiency, Affiniti 30 places relevant, easy-to-learn controls right at your fingertips, streamlining workflow. Affiniti 30 is designed to make a full day of scanning comfortable. Because 80% of ultrasound clinicians experience work-related pain, and more than 20% suffer a career-ending injury,² we've designed our intuitive, tablet-like touchscreen interface to reduce reach and button pushes.

The touchscreen is one of the largest in its class, so users can easily make selections and control scanning while focusing on their patients.

The control panel and generously sized 54.6 cm (21.5 in) monitor add to the system's ergonomics, enhancing scanning comfort whether standing or sitting. At just 83.5 kg (184 lb), Affiniti 30 is one of the lightest in its class and is 16% lighter than its predecessor.* With a small footprint, the system can be easily moved, and fits into small spaces.

Results are easy to share

When an exam is finished, a full suite of DICOM capabilities make it easy to share information. Structured reporting facilitates patient workflow and information by giving you the ability to transfer measurements, images, and reports over network share, and wireless capability plus easy connection to printers helps you document exams.



With image replication and TGCs on its tablet touchscreen, Affiniti 30 was designed to reduce reach and button pushes.



Easy to maneuver, the system fits into small spaces with ease.

¹ 2014 internal workflow study comparing Affiniti to HD15.

² Society of Diagnostic Medical Sonography, Industry Standards for the Prevention of Musculoskeletal Disorders in Sonography, May 2003.

* HD15

A **smart** investment

Built to withstand the rigors of daily use, the Affiniti 30 offers low operating costs and is backed by the support and services of Philips. The Philips ultrasound total value proposition provides the value you seek with solutions to help you lower cost, increase uptime, and deliver better patient care well into your future, making the Affiniti 30 a smart investment.

Always there, always on

The value of a Philips ultrasound system extends far beyond technology. With every Affiniti 30 system, you get access to our award-winning service organization, competitive financing, and educational tools that help you get the most out of your system. We work as one with your team to keep your Affiniti 30 system running smoothly.

- Award-winning service organization with decades of excellence*
- Modular design for enhanced reliability and rapid repair
- Intelligent software architecture is easily optimized, maintained, and restored while patient data is kept safe and secure
- Philips remote services** can anticipate issues to prevent them from occurring, accelerate resolution, and increase system availability

Business optimization tools such as OmniSphere allow you to use the power of data and connectivity to generate actionable insights and enhance productivity to improve your return on investment.



Service Request button for immediate access to Philips support.

Exceptional serviceability

The system features a superb modular design for rapid repair.

* Philips is rated number one in overall service performance for ultrasound for 23 consecutive years in the annual IMV ServiceTrak survey in the U.S.
** Not all services available in all geographies; contact your Philips representative for more information. May require service contract.



ISSL technology

This industry-standard protocol meets global privacy standards and provides a safe and secure connection to the Philips remote services network using your existing Internet access point.

Count on us as your patients count on you

Partner with us to maximize utilization and uptime of your Affiniti 30 system.

Remote service capabilities maximize efficiency

Easy, rapid technical and clinical support through the remote desktop service that allows for a virtual visit with a Philips expert.*

If you prefer to keep your know-how in-house, the OmniSphere Remote Technical Connect capability allows your BioMed team remote access to Philips systems on your network so that you can have remote service capabilities your way.

Proactive monitoring solutions maximize uptime

Philips proactive monitoring increases system availability by predicting potential system disruptions and proactively acting on them, letting you focus on what is most important – your patients.

Immediate support request at your fingertips

Enter a request directly from the control panel for fast and convenient communication with Philips experts without leaving your patient, minimizing interruptions to workflow.

On-cart transducer test provides confidence in your transducer quality

The on-cart transducer test provides a non-phantom method to test Affiniti 30 transducers at any time, giving you confidence in your diagnostic information.

Utilization reports for confident decision-making

Data intelligence tools can help you make informed decisions to improve workflow, deliver quality patient care, and decrease total cost of ownership. The on-board utilization tool provides individual transducer usage data and the ability to sort by exam type. The OmniSphere Utilization Optimizer takes this a step further by providing easy-to-use charts and graphs for all of your applicable** networked Philips systems.

Understanding your needs, designed for you

Our flexible RightFit service agreements, education offerings, and innovative financing solutions can be adapted to meet your needs and strategic priorities.

- **Technology Maximizer Program:** Helps keep your system performing at its peak by continuously providing the latest software from Philips at a fraction of the cost of the same upgrades purchased individually over time.
- **Xtend Coverage:** Lets you choose additional service coverage for your ultrasound equipment at the time of purchase to more easily calculate your total cost of ownership.
- **Clinical education solutions:** Comprehensive, clinically relevant courses, programs, and learning paths designed to help you improve operational efficiency and enhance patient care.

* Not all services available in all geographies; contact your Philips representative for more information. May require service contract.

** Check with your Philips representative for system compatibility.



© 2016 Koninklijke Philips N.V. All rights are reserved.
Philips reserves the right to make changes in specifications and/or to discontinue any product at any time without notice or obligation and will not be liable for any consequences resulting from the use of this publication. Trademarks are the property of Koninklijke Philips N.V. or their respective owners.

www.philips.com/Affiniti

Printed in The Netherlands.
4522 991 21151 * NOV 2016