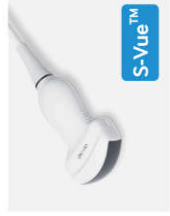


Comprehensive selection of transducers

Curved array transducers



CA1-7AD

- Application : abdomen, obstetrics, gynecology



CA2-9AD

- Application : abdomen, obstetrics, gynecology



CF4-9

- Application : pediatric, vascular



CA3-10A

- Application : abdomen, obstetrics, gynecology, musculoskeletal, pediatric

Endo-cavity transducers



EA2-11B

- Application : obstetrics, gynecology, urology



EA2-11AR

- Application : obstetrics, gynecology, urology



VR5-9

- Application : obstetrics, gynecology, urology

Linear array transducers



LA3-14AD

- Application : small parts, vascular, musculoskeletal



LA3-16A

- Application : small parts, vascular, musculoskeletal



LA2-9A

- Application : abdomen, small parts, vascular, musculoskeletal



LA4-18BD

- Application : small parts, vascular, musculoskeletal

Phased array transducers



PA1-5A

- Application : abdomen, cardiac, vascular



PA3-8B

- Application : abdomen, cardiac, pediatric



PA4-12B

- Application : cardiac, pediatric

Volume transducers



CV1-8AD

- Application : abdomen, obstetrics, gynecology



V5-9

- Application : obstetrics, gynecology, urology

TEE transducer



MMPT3-7

- Application : cardiac

CW transducers



CW6.0

- Application : cardiac



DP2B

- Application : cardiac



DP8B

- Application : cardiac, vascular

* Some of the transducers may not be available in some countries.