



PHILIPS

Ultrasound

Affiniti 50

It understands your everyday

Affiniti 50 – Philips latest innovation in ultrasound

You always go above and beyond to provide the best care to your patients. But you are expected to do so with less time, fewer resources, and higher patient volume. The care you want to provide deserves tools that can set you ahead and help you stay ahead.

We designed Philips Affiniti 50 to give you the confident results you need, in the time you have. Engineered for efficiency and reliability and powered by Philips proven performance, it gets you diagnostic images you need, quickly – even on the most technically difficult patients. Its intuitive design and walk-up usability help you provide elegant, efficient care – every day.

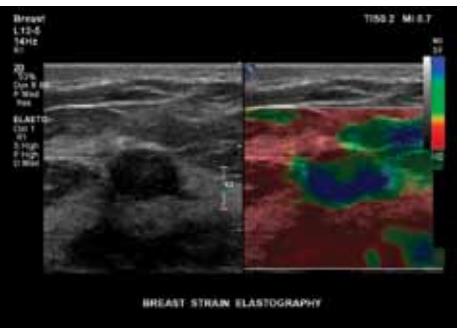
Key advantages

- A powerful combination of performance and workflow for quick, confident diagnosis
- Designed around your everyday, with walk-up usability, ergonomics, and mobility
- Reliability, sustainability, and support services to enhance your ownership experience



No matter what the exam type, Philips Affiniti 50 delivers exceptional image quality quickly, with little or no additional image optimization required. It has all the capabilities needed for day-to-day applications, plus the advanced features and automation that enhance exam efficiency and simplify workflow.

Workflow meets **wow**



Elastography helps clinicians assess tissue stiffness.



A full array of transducers offers you excellent image quality on a variety of exam types.

Affiniti 50 combines outstanding performance and efficient workflow and features innovative Philips technologies.

- The system's Precision Beamforming delivers superb spatial and contrast resolution, outstanding tissue uniformity, few artifacts, and reduced image clutter.
- Tissue Specific Presets (TSPs) automatically adjust over 7500 parameters to optimize the transducer for the specific exam type, producing excellent image quality with little or no need for image adjustment.

Affiniti 50 is also equipped with automation features, such as AutoSCAN and Auto Doppler, which decrease repetitive tasks and make getting a great image easy. Philips SmartExam-guided workflow delivers exam efficiency.

Included in the system's many clinical tools

- **Elastography:** Affiniti 50 supports highly sensitive strain elastography, which requires no external compression and can be used to assess relative tissue stiffness across a variety of applications, including small parts, breast, and gynecology.
- **Anatomical Intelligence Ultrasound (AIUS):** Automation that leads to everyday efficiency, AIUS tools such as Automated Cardiac Motion Quantification^{A.I.} (aCMQ^{A.I.}) and Automated 2D Cardiac Quantification^{A.I.} (a2DQ^{A.I.}) provide rapid access to global longitudinal strain (GLS) and validated 2D ejection fraction (EF) in 10 seconds.

Experience our elegantly simple control panel that eliminates unnecessary buttons while keeping the most frequently used ones nearby. Affiniti 50 was designed for walk-up usability and is so intuitive that it requires minimal training on system use to be able to complete an exam.*

Silent as a library, with a smaller footprint than conventional ultrasound models, it will not distract you from the care you want to provide.

And go ahead, take it on the go. It can be placed in sleep mode within two seconds and boot up to full functionality in just seconds. At just 83.5 kg (184 lb), Affiniti 50 is one of

the lightest in its class and 16% lighter than its predecessor,** which makes pushing the system down hallways and in tight spaces easy.

It consumes less energy than a toaster, which can help you save on energy and cooling costs.

We know that ergonomics matter to you – 80% of ultrasound clinicians experience work-related pain, and more than 20% suffer a career-ending injury.¹ With the largest monitor in its class and image replication and TGCs on its tablet touchscreen, Philips Affiniti 50 was designed to reduce reach and button pushes to make a full day of scanning comfortable.

Comfort meets competence

Compact and lightweight

Physical dimensions

Monitor width 54.6 cm (21.5 in)
Height 142.2 cm–162.6 cm (56–64 in)
Depth 98.3 cm (38.7 in)
Weight 83.5 kg (184 lb) without peripheral devices

You won't notice it's there unless it's gone, but users have reported our innovative easy clip cable management solution keeps cables tangle-free and reduces damage while decreasing cable strain to enhance comfort while scanning.



54.6 cm (21.5 in) monitor articulates for easy viewing and folds down for transport

Goes to sleep in two seconds; back to full functionality in just seconds

Tablet-like touchscreen

Service Request button for immediate access to Philips support

Elegant control panel, simplified for ease of use

Four transducer ports and one-handed transducer access

¹Society of Diagnostic Medical Sonography, Industry Standards for the Prevention of Musculoskeletal Disorders in Sonography, May 2003.

* 2014 internal workflow study comparing Affiniti to HD15.

** HD15

A smart investment

Affiniti 50 boasts a low total cost of ownership, making it a smart investment. Built to last, it is designed to withstand the rigors of high patient volume. To enhance uptime, it features:

- A modular design for enhanced reliability and rapid repair
- Philips remote services* monitoring, which corrects issues using a standard Internet connection, reducing the need for service calls
- Access to our award-winning service organization

The system has undergone extensive reliability testing, and is backed by Philips support and value-added services. Our educational programs help you get the most out of your system, and our competitive financing puts this high performance system within your reach. Designed with sustainability in mind, the system is energy-efficient and has low cooling costs. It consumes nearly 40% less power than its predecessor.**



Philips Affiniti 50 features a tablet-like touchscreen and intelligently located, centralized controls, as well as an industry-leading, 54.6 cm fold-down monitor for easy mobility.



Service support, financing programs, and educational offerings give you peace of mind to get the most out of your system.

*Not all services available in all geographies; contact your Philips representative for more information. May require service contract.
**HD15

