



Vivid S60N

Patient Care. Elevated.



The Vivid™ S60N is a portable, robust 2D cardiovascular ultrasound system designed to help you reach new heights of care efficiency and effectiveness.

Patient Care. Elevated.

Empowered. Expanded...Artificial Intelligence.

At GE Healthcare, we're committed to support the vital work you do with patients every day. Using the extraordinary processing power of our breakthrough software beamformer platform – cSound™ 3.0 – as a catalyst, we've developed an array of innovative algorithms and applications to help you keep elevating patient care.

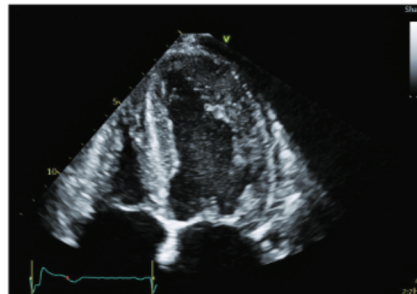
As a result, now you can empower your care team with the expanded advantages and artificial intelligence of the Vivid™ S60N cardiovascular ultrasound system. Diagnose more confidently with the help of enhanced 2D and color image quality. Accelerate exams via extended automatic Doppler measurements for TEE and TTE. Gain

reproducible results with advanced capabilities for quantifying heart function and ejection fraction. All so you can make every moment count with patients – seeing problems clearly and quickly, performing procedures with great precision ... and providing Patient Care. Elevated.

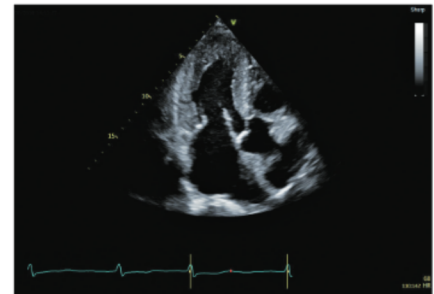
Visualization

Crisp imaging. Deep views.

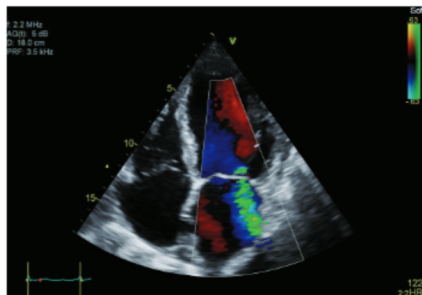
Experience the exceptional 2D image quality to support assessments and diagnoses in the echo lab, powered by cSound's advanced software image reconstruction and graphics. View detailed images of the heart by true confocal imaging, without the limitation of focal zones or sacrifice of frame rate and spatial resolution. Navigate smooth, continuous and detailed images with ease via new enhancements in color.



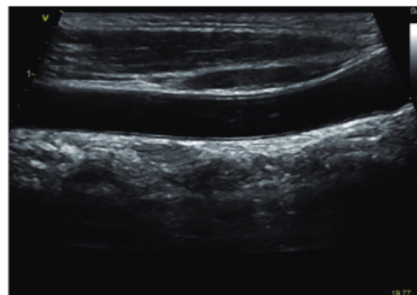
Virtual Apex – Phased array probes provide a wide field of view for enhanced visualization of structures at the sides of the sector.



True Confocal Imaging – TCI provides an ultra-narrow-focused two-way beam profile throughout the field of view, maintaining frame rate and enhancing dynamic contrast resolution – without zone stitching or multi-line acquisition artifacts.



Adult Echo Color Doppler – The 3Sc phased array cardiac probe combines acoustic amplifier technology and an advanced heat dissipation regime to provide ultra-wide bandwidth and high-end image quality.

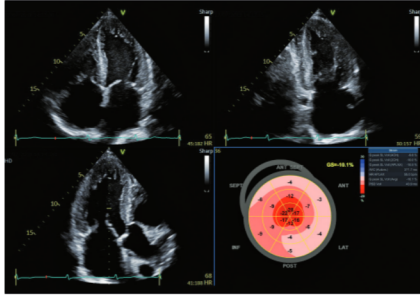


Virtual Convex™ – This app provides a wider far field visualization and aims to enhance image quality on linear probes.

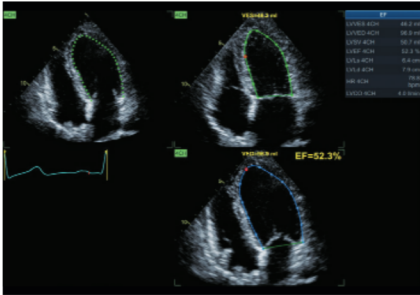
Quantification

Define treatments

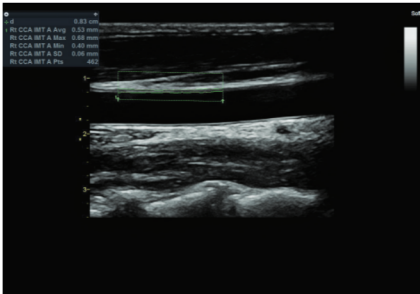
Quantification with Vivid S60N is all about helping providers evaluate and address cardiovascular issues and to help them define treatments. Count on a full suite of easy-to-use, intuitive tools to support your work.



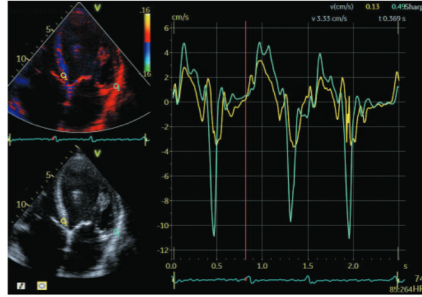
Automated Function Imaging* (AFI) 2.0 – This second-generation tool for assessing and quantifying left ventricular wall motion is applicable to 2D transthoracic and TEE data. With the integrated AutoEF function, you can calculate ejection fraction without leaving the app.



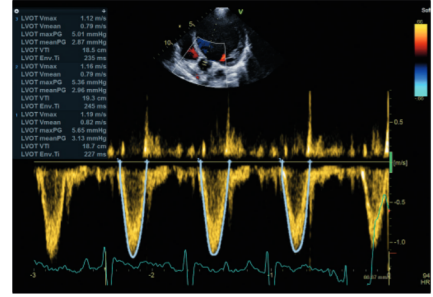
AutoEF 2.0 – This second-generation tool is based on a 2D speckle-tracking algorithm and Simpson's rule. It is applicable to 2D transthoracic and TEE data.



Auto IMT* – Auto IMT provides automatic edge detection and measurement of the Intima-Media Thickness. It is fully integrated with the measurement package, worksheet, archiving and reporting functions.



Quantitative Analysis* – Quantify tissue velocity based on parametric images, including Strain, Strain Rate and Displacement, as well as Contrast images.

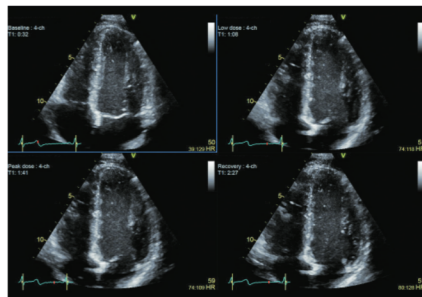


Cardiac Auto Doppler – This artificial intelligence-based tool provides Doppler measurements over all heart cycles for the most common parameters, supporting consistent results and potentially saving time in both adult and pediatric TTE and TEE studies.

Workflow

Streamline your exams

Vivid S60N with cSound 3.0 performance empowers your team with a variety of efficient tools. You'll find it easy to achieve consistent information across a wide variety of patients. Tools like the ability to quantify wall motion abnormalities can help you diagnose. You'll also appreciate the easy-to-use tablet-like experience of the Image Manager.



Smart Stress* – This package with memory buffer offers pharmaceutical, treadmill and bicycle stress exam protocols, with user-configurable templates.

This image shows a screenshot of the Scan Assist Pro interface, displaying a list of 16 exam protocols for the Carotid region. Each protocol includes a checkmark, a description, and a corresponding waveform icon.

Protocol	Icon
5 Rt CCA Sag Prox	PI
6 Rt CCA Sag Dist	PI
7 Rt ICA	PI
8 Rt ECA	PI
9 Rt CCA	PI
10 Rt ICA	PI
11 Rt Bulb	PI
12 Rt CCA Prox	PI
13 Rt CCA Mid	PI
14 Rt CCA Dist	PI
15 Rt Vert	PI
16 Rt ECA Prox	PI

Scan Assist Pro* – Customize the system for your standard echo, vascular and abdominal exams. The protocols assist you by automatically setting up modes and measurements, as well as annotations, helping enhance image acquisition consistency and helping reduce the number of keystrokes.

Security

Vivid S60N is built and configured for reliability and security.

LDAP – Help ensure patient data safety with Lightweight Directory Access Protocol, which allows your IT team to maintain greater control of who's in the system, reducing the risk of breaches.

Configurable system password – There are fully configurable user log-on passwords and internal passwords that can meet your IT department's requirements regarding security strength.

Disk encryption of the drive, which contains patient archive and images, helps ensure safety and privacy of the data, even in case of theft.

Windows® 10 Operating System with application whitelisting to prevent unauthorized programs from running and potentially harming the scanner.

Connectivity

Pediatric DICOM® SR support* – Pediatric measurements sent by SR automatically populate the pediatric report on the receiving side for fast, accurate review elsewhere.

Enhanced support for cardiac and vascular DICOM SR,† including user defined measurements.

Enhanced DICOM review – Accelerate reviewing and reporting by using contrast, brightness and zoom/pan controls to optimize DICOM images.

Tricefy® Uplink* – Expedite uploading of images and patient data to Tricefy Cloud – a long-term archive that enables image sharing with colleagues or patients.

*Optional

**Compared to scanning without Virtual Convex.

© 2018 General Electric Company - All rights reserved.

General Electric Company reserves the right to make changes in specifications and features shown herein, or discontinue the product described at any time without notice or obligation. Contact your GE Healthcare representative for the most current information. Please visit www.gehealthcare.com/promotional-locations. This does not constitute a representation or warranty or documentation regarding the product or service featured.

The results expressed in this document may not be applicable to a particular site or installation and individual results may vary. This document and its contents are provided to you for informational purposes only and do not constitute a representation, warranty or performance guarantee from GE Healthcare.

GE, the GE Monogram, imagination at work, cSound, Vivid, and XDclear are trademarks of General Electric Company or one of its subsidiaries. DICOM is the registered trademark of the National Electrical Manufacturers Association for its standards publications relating to digital communications of medical information. Tricefy is a trademark of Trice Imaging, Inc. Windows is a trademark of Microsoft, Inc. All third party trademarks are the property of their respective owners.

