



# LOGIQ™ E10

Empowering You to  
Make a Difference



[gehealthcare.com](http://gehealthcare.com)





GE Healthcare ultrasound is trusted by more clinicians than any other brand. Knowing that **600 million lives**<sup>1</sup> each year are impacted by our technology pushes us forward. Our next-generation LOGIQ E10 system is leading a digital transformation in ultrasound, enabling clinicians to improve imaging for patients from head to toe, no matter their age or body habitus.

## > EMPOWERING confident diagnosis

The LOGIQ E10 system provides a new standard in imaging, advanced tools, and enhanced workflow ergonomics so clinicians can scan, diagnose, and treat a wide range of patients across a broad spectrum of conditions.

Central to the new system is the cSound™ Architecture that combines versatile XDclear™ probes and the new cSound Imageformer to deliver exceptional image quality.

**The cSound Architecture:** It provides you with confident diagnosis, comprehensive tools and concise workflow. This GE exclusive automatically and continuously delivers incredible uniformity from near to far field. The LOGIQ E10 acquires and reconstructs data in a similar way to an MRI or CT system, powered by an advanced graphics processing unit (GPU) with 48x the data throughput and 10x the processing power of our previous systems. There's no need to adjust the focus – the information you need is there, instantly.

**E-Series and new XDclear probes:** Powerful high fidelity and broad bandwidth produce high resolution images whether scanning superficial or deep targets – or at any point in between.

The LOGIQ E10 works with GE's highest performing XDclear probes to address a wide range of clinical uses. Embedded Volume Navigation sensors in select probes simplify workflow and enhance productivity for interventional procedures.



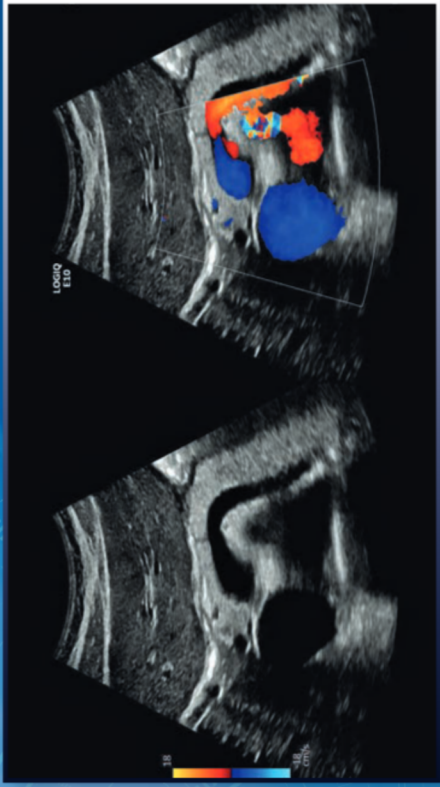


## The result?

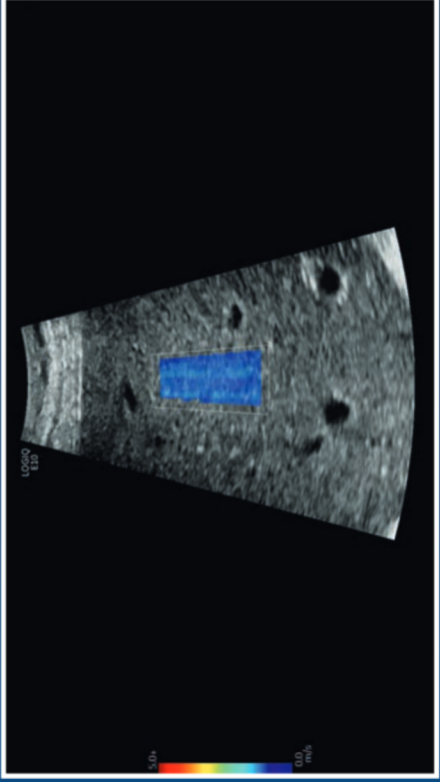
Clinicians can acquire incredibly detailed images faster than ever before possible with the LOGIQ E10. Its speed, consistency, and versatility in imaging enable high quality, efficient exams across a wide variety of clinical applications – even in technically challenging cases such as patients with high BMI or advanced disease.

.....

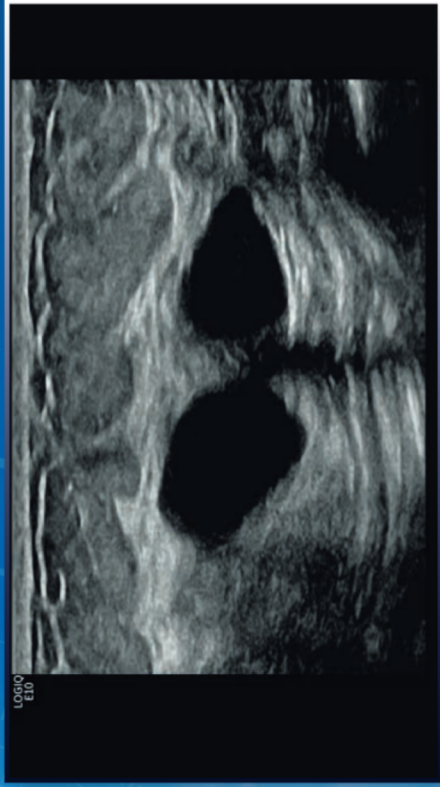
# > EMPOWERING comprehensive tools



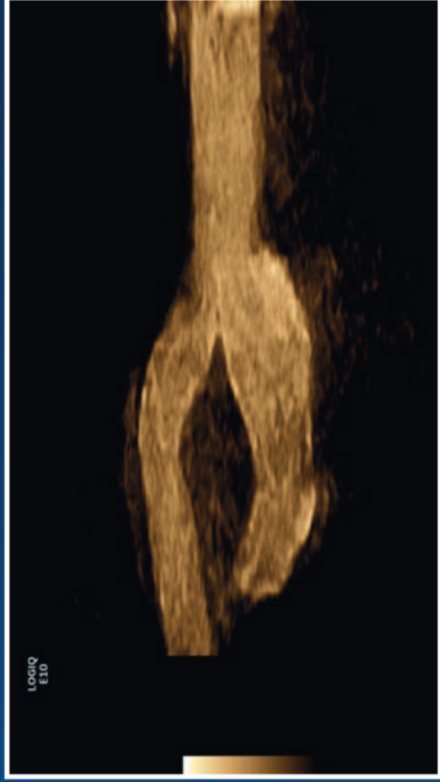
Dual Image CF Pancreas, C1-6-D



Liver Shear Wave Elastography, C1-6-D

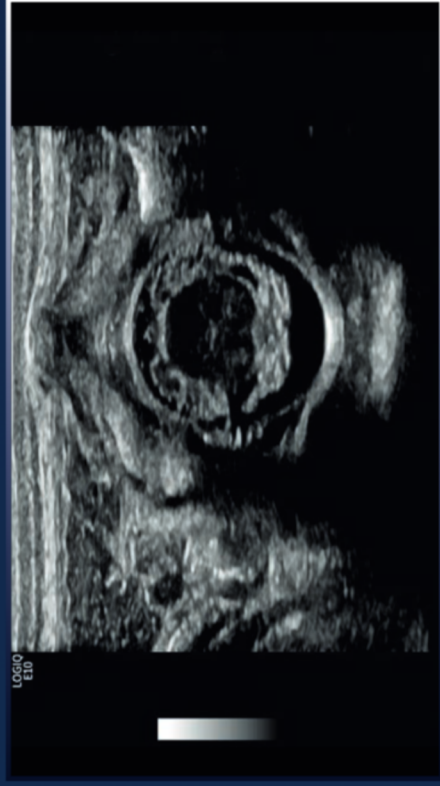


Breast Cysts, ML6-15-D

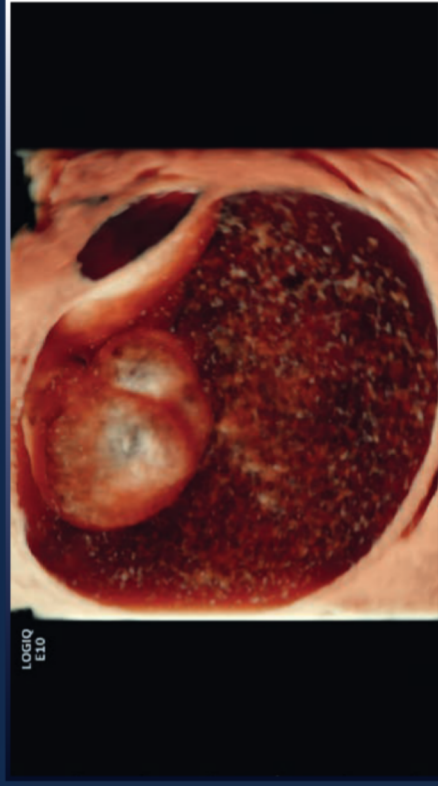


Carotid B-Flow, L2-9-D

Ultrasound is essential in nearly every clinical scenario, including abdominal imaging; interventional; management of liver disease; breast, small parts and musculoskeletal imaging; and OB/GYN, pediatric and cardiovascular studies. Developing expert tools to support these specialized clinical needs is a hallmark of GE ultrasound.



Neonatal Spine, L8-18i-D



Ovarian Mass 3D Render with HDlive™, RIC5-9-D

# > EMPOWERING concise workflow

Big data, automation, and analytics are changing the future of ultrasound. The LOGIQ E10 is designed to help your department take advantage of digital advancements to improve exam efficiency, user productivity, data security, and equipment utilization.

## At the console

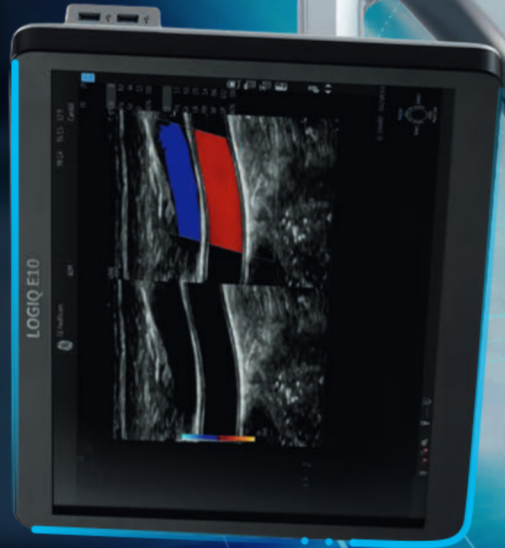
- **Advanced ergonomics** include easy-to-reach controls, an adjustable floating keyboard, and an articulating monitor to help speed exams and reduce the risk of work-related stress injuries
- **Exceptional mobility** is enhanced with Power Assistant, the onboard battery that keeps LOGIQ E10 booted up and ready to image even when moved to different locations. On-board storage ensures supplies are at hand

## In the exam room

- **Productivity and auto measurement packages** – such as Scan Assistant, Semi-Quantitative Flow Analysis, Breast, Thyroid and OB – help standardize exam quality while saving time
- **GE raw data** now captures twice the data and helps shorten study times by enabling image processing and quantification after the exam

## Across the department

- **Powerful data security** features help assure HIPAA compliance, protect patient data, and guard against costly breaches
- **Analytics tools** provide visibility into utilization to assist in equipment planning and placement
- **On-demand training resources** help new users become productive faster
- **Remote Control App:** Ability to operate the LOGIQ E10 from an Android™ tablet or phone that has the LOGIQ Smart App loaded onto it
- **Photo Assistant App:** A picture is worth a thousand words in reporting. Acquire and send photos of relevant anatomy – right from an Android tablet or phone – to provide valuable context for documentation and comparison after a procedure
- **Remote Expert Service with InSite™** enables remote diagnosis and repair to minimize workflow disruption





# cSound Architecture Ultrasound for today, platform for tomorrow.

Leveraging the power of its next-generation architecture and digital technologies, the LOGIQ E10 system empowers you to improve clinical, financial, and operational outcomes, while providing a platform for growth in the years ahead.

1. Installed base of GE Healthcare ultrasound at ~300,000, with on average eight patients per device per day, and 255 working days per year.

## Imagination at work

Product may not be available in all countries and regions. Full product technical specification is available upon request. Contact a GE Healthcare Representative for more information. Please visit [www.gehealthcare.com/promotional-locations](http://www.gehealthcare.com/promotional-locations).

Data subject to change. ULT-0616-02-18-EN-US

© 2018 General Electric Company.

GE, the GE Monogram, Imagination at work, LOGIQ, XDclear, cSound, B-Flow, HDlive, and InSite are trademarks of General Electric Company. Android is a trademark of Google, Inc. All other third-party trademarks are the property of their respective owners.

Reproduction in any form is forbidden without prior written permission from GE. Nothing in this material should be used to diagnose or treat any disease or condition. Readers must consult a healthcare professional.

February 2018 JB54769XX(1) 300-18-U009E