



Vivid S70N



Ultrasound. Elevated.

The Vivid™ S70N is a portable, robust cardiovascular ultrasound system with 4D capability designed to help you reach new heights of care efficiency and effectiveness.

Productivity. Elevated.

Minimize the distractions. Expand your focus. Now you can obtain clear, detailed imaging quickly and easily. New technologies and workflow tools on Vivid S70N provide fast, accurate visualization and quantification, while reducing clicks and repetitive tasks. You'll love how these cSound-enabled automated features help streamline both routine exams and advanced studies. With the time you save and insights you gain, you can concentrate on evaluating critical cases and delivering what matters most – high-quality, efficient care.

Vivid S70N with cSound

Put your department ahead of the technology curve by combining the proven breadth and performance of the Vivid product line with cSound,™ the powerful software beamformer image reconstruction platform. Vivid S70N and cSound take 4D ultrasound to a whole new level – potentially helping to reduce non-diagnostic exams and cost of care.¹

Adult Echo

Visualization

Crisp imaging. Deep views.

Experience the exceptional 2D image quality powered by GE's XDclear probe technology paired with cSound's advanced software image reconstruction and graphics. Additionally, view detailed images of the heart for assessment and diagnoses in the echo lab. Navigate smooth, continuous and detailed images with ease via new enhancements in color and clarity.

Quantification

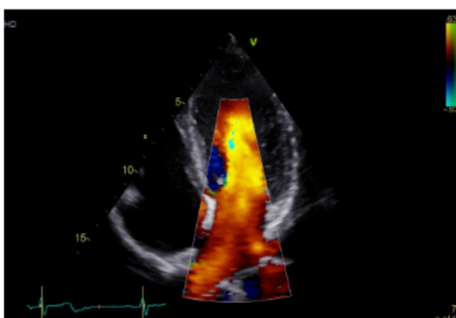
Define the care path

Quantification with Vivid S70N is all about helping providers evaluate problems and pursue the path forward. Count on a full suite of intuitive tools to make your work easy and efficient. Quickly, accurately and automatically² quantify key heart functions.

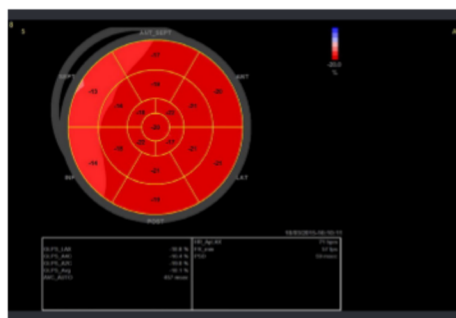
Workflow

Streamline your exams

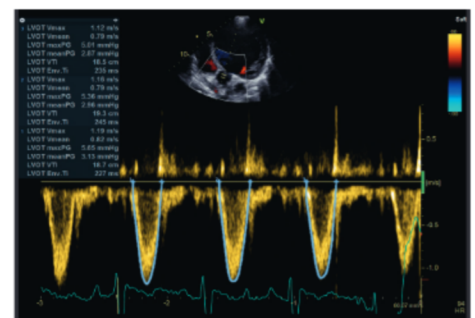
Vivid S70N with cSound performance empowers your team with a variety of efficient tools. You'll find it easy to achieve consistent information across a wide variety of patients. Tools like the ability to quantify wall motion abnormalities can help you diagnose. You'll also appreciate the easy-to-use tablet-like experience of the Image Manager and configurable interface.



Adult Echo Color Doppler – The M5Sc phased array cardiac transducer merges matrix array with high-performing XDclear technology and provides ultra-wide bandwidth and superb image quality.



Automated Function Imaging (AFI)* – Assess and quantify left ventricular wall motion, calculating a large set of parameters.



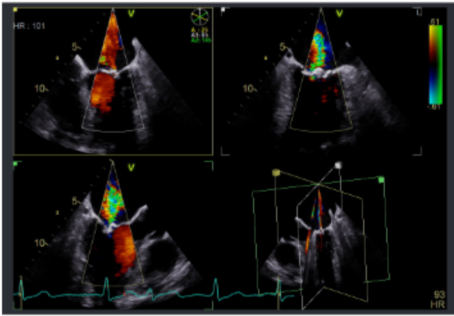
Cardiac Auto Doppler – With minimal user interaction, Cardiac Auto Doppler provides Doppler measurements over all heart cycles for the most common parameters, supporting consistent results in advanced studies and potentially saving time.

Interventional

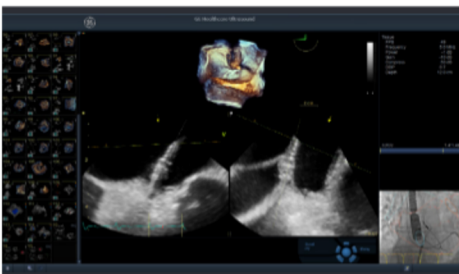
Visualization

Make your work easy and efficient

With TEE procedures growing, so is the need to find ways to achieve the benefits of 4D imaging without compromising productivity.



4D TEE supports invasive surgical procedures with quick, clear insights.



View-X* displays X-ray from fluoroscopy in real time right on your Vivid screen as a picture in picture, facilitating communication between team members.

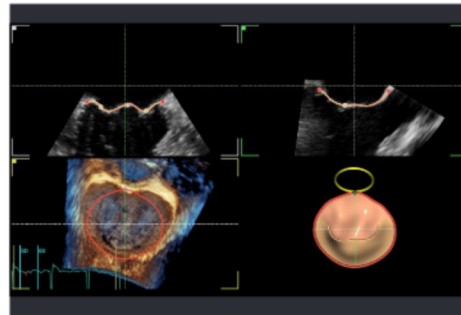


Micro TEE – The multiplane 10T-D micro TEE probe with robust cSound™ processing helps you clearly visualize complex heart conditions in neonatal patients (down to 2.5 kg).

Quantification

Explore and evaluate with ease

Accurately and automatically quantify LV and other functions with a full suite of intuitive tools.



4D Auto MVQ* – Supporting TEE images, this integrated package helps visualize and quantify the mitral valve via a semi-automatic, surface-detecting algorithm.

Workflow

Facilitate complex procedures

You can move smoothly through your work, with tools that help to simplify and reduce scanning time.

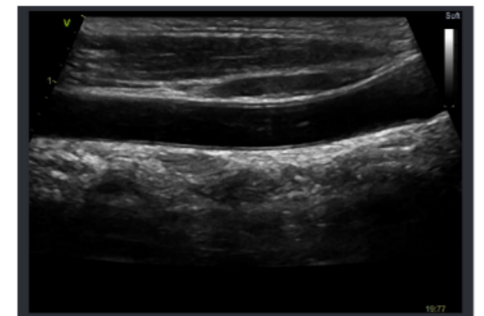


FlexiViews provides quick access to predefined 4D/Multiplane views during live mode, potentially reducing scan time during complex interventional procedures.

Shared Services

Image a wide range of patients

Vivid S70N delivers superb performance in your shared services operation, including cardiac, stress echo, vascular, abdominal, OB/GYN and small-parts applications.



Virtual Convex³ provides a wider far field visualization and aims to enhance image quality on linear probes.

Security

Vivid S70N is built and configured for reliability and security.

LDAP – Help ensure patient data safety with Lightweight Directory Access Protocol, which allows your IT team to maintain greater control of who's in the system, reducing the risk of breaches.

Configurable system password – There are fully configurable user log-on passwords and internal passwords that can meet your IT department's requirements regarding security strength.

Disk encryption of the drive, which contains patient archive and images, helps ensure safety and privacy of the data, even in case of theft.

Connectivity

Pediatric DICOM® SR support* – Pediatric measurements sent by SR automatically populate the pediatric report on the receiving side for fast, accurate review elsewhere.

Enhanced support for cardiac and vascular DICOM SR, including user defined measurements.

Enhanced DICOM review – Accelerate reviewing and reporting by using contrast, brightness and zoom/pan controls to optimize DICOM images.



GE Healthcare provides transformational medical technologies and services to meet the demand for increased access, enhanced quality and more affordable healthcare around the world. GE (NYSE: GE) works on things that matter – great people and technologies taking on tough challenges.

From medical imaging, software & IT, patient monitoring and diagnostics to drug discovery, biopharmaceutical manufacturing technologies and performance improvement solutions, GE Healthcare helps medical professionals deliver great healthcare to their patients.

Imagination at work

*Optional

¹ Robert Kulina, MD, MS; Sunil Agarwal, MD, PhD; Brandon Wiley, MD; Jagat Narula, MD, DM, PhD, FACC; Partho P. Sengupta, MD, MBBS, DM, FASE; Farooq A. Chaudhry, MD, FACP, FACC, FASE, FAHA Mount Sinai Icahn School of Medicine NY, NY. New Software Beamforming Algorithm is Superior to Standard Hardware-Based Beamformer in Endocardial Border Detection. GE Healthcare. 2016.

² User review and acceptance required.

³ Compared to scanning without Virtual Convex. .

© 2018 General Electric Company - All rights reserved.

General Electric Company reserves the right to make changes in specifications and features shown herein, or discontinue the product described at any time without notice or obligation. Contact your GE Healthcare representative for the most current information. Please visit www.gehealthcare.com/promotional-locations. This does not constitute a representation or warranty or documentation regarding the product or service featured.

The results expressed in this document may not be applicable to a particular site or installation and individual results may vary. This document and its contents are provided to you for informational purposes only and do not constitute a representation, warranty or performance guarantee from GE Healthcare.

GE, the GE Monogram, imagination at work, cSound, Vivid, and XDclear are trademarks of General Electric Company or one of its subsidiaries. Biosense Webster is a trademark of Biosense Webster, Inc. ACUSON and AcuNav are trademarks of Siemens Healthcare GmbH. DICOM is the registered trademark of the National Electrical Manufacturers Association for its standards publications relating to digital communications of medical information. All third party trademarks are the property of their respective owners.

JB54782XX