

# RS80A ULTRASOUND

SAMSUNG

PREMIUM AT ITS BEST



# CONFIDENT DIAGNOSIS

The RS80A delivers sophisticated digital image processing to meet the needs of today's changing healthcare environment.

With Samsung's newly developed S-Vision architecture in combination with S-Vue transducer technology, the RS80A provides outstanding image clarity and continues to push the boundaries of ultrasound imaging.

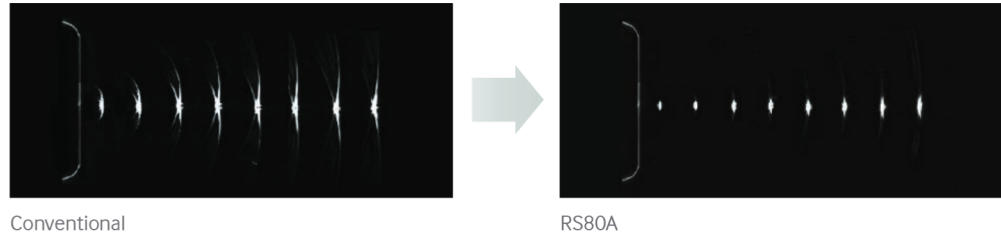
You can be assured the RS80A will provide exceptional image quality for confident diagnosis.



# Newly Developed S-Vision Architecture and S-Vue Transducer Technology

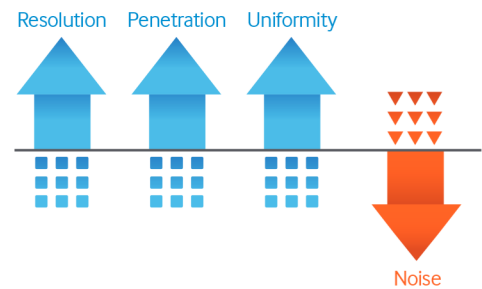
## S-Vision Beamformer

The S-Vision Beamformer is the first step in acquiring high-resolution images for confident diagnosis. Designed to optimize signal transmission and reception, the S-Vision Beamformer provides excellent image quality and contrast resolution.



## S-Vision Imaging Engine

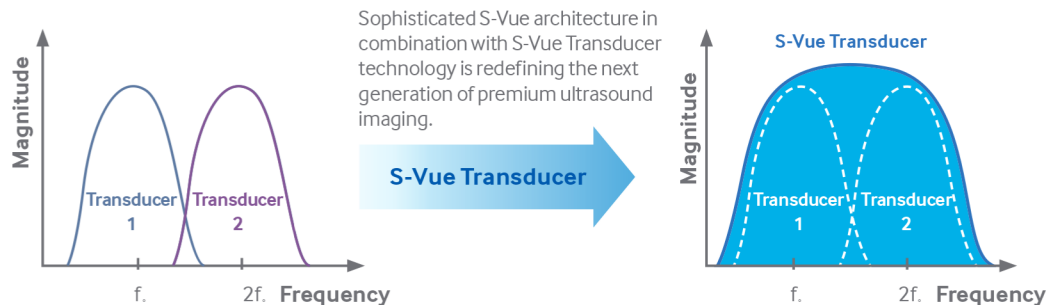
Incorporating Samsung's rich history of electronic excellence, the S-Vision imaging engine effectively removes noise artifacts, resulting in clear, detailed resolution and tissue uniformity.



## S-Vue Transducer



S-Vue Transducers ensure greater penetration and excellent image clarity on even the most challenging of patients. The unique design of the S-Vue Transducers provides broader bandwidth and higher sensitivity, delivering consistent image clarity.



Sophisticated S-Vue architecture in combination with S-Vue Transducer technology is redefining the next generation of premium ultrasound imaging.

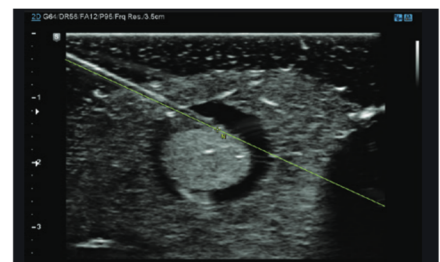
## NEEDLE GUIDANCE:

The ability to confidently visualize needle trajectory is essential when planning interventional procedures. Samsung's precise guidance technology, Clear Track, displays accurate needle location, regardless of entry angle.



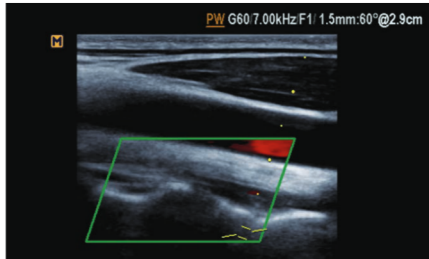
### Clear Track

When performing interventional procedures, Clear Track provides enhanced visualization of the needle pathway. The needle sensor displays a projected path of the needle in real time, elevating user confidence and accuracy.

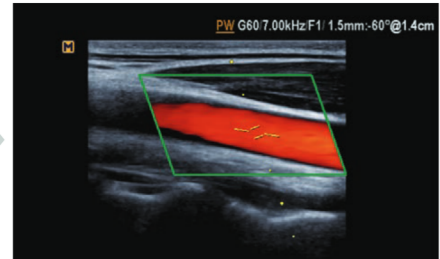


# ADVANCED QUICKSCAN™

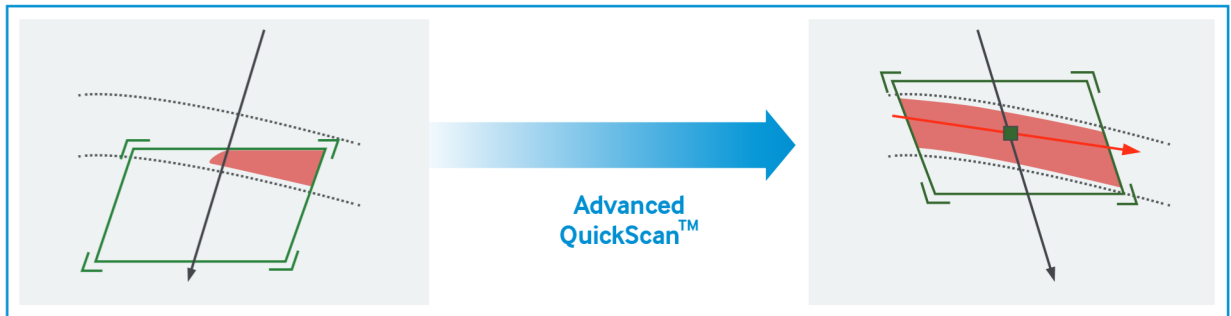
Designed to maximize efficiency, Advanced QuickScan technology provides intuitive optimization of gray scale and Doppler parameters. One touch of the QuickScan button maximizes efficiency and workflow by adjusting functions including color gain and color box location.



CCA Doppler without QuickScan™



CCA Doppler with QuickScan™



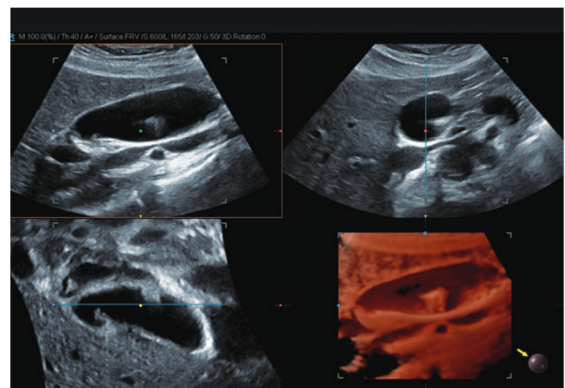
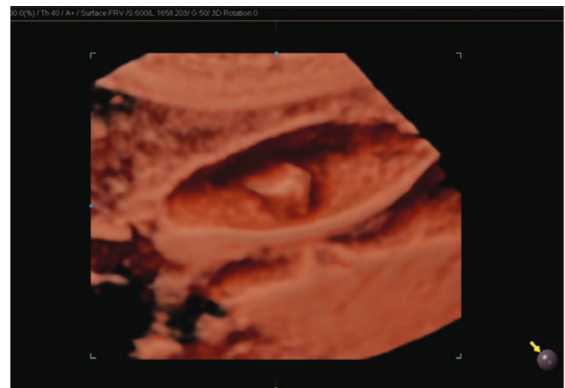
# ENHANCE YOUR VIEWING PERSPECTIVE

The RS80A offers premium performance through a comprehensive 3D technology suite that features the latest innovation, Realistic Vue.



## Realistic Vue™

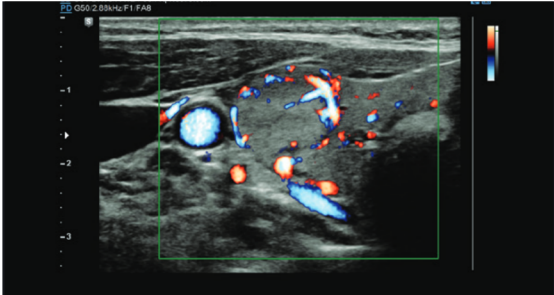
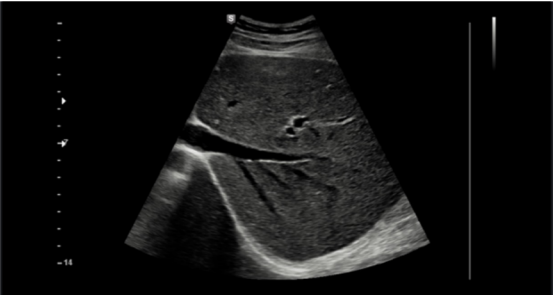
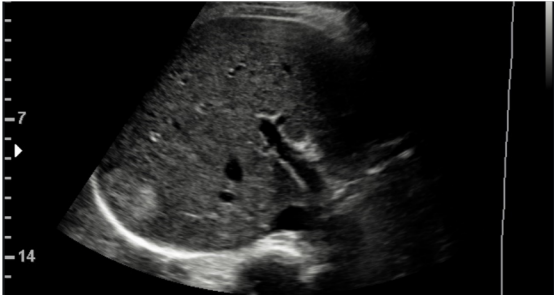
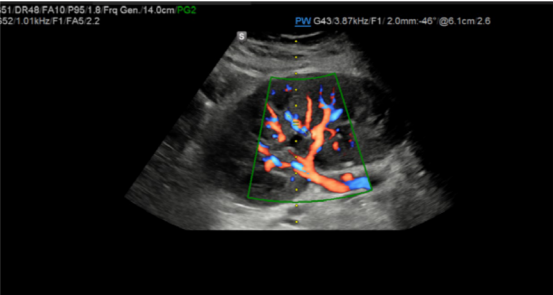
Realistic Vue displays high-resolution 3D anatomy with exceptional detail and realistic depth perception. User-selectable light source direction creates intricate graduated shadows to better define anatomical structures.



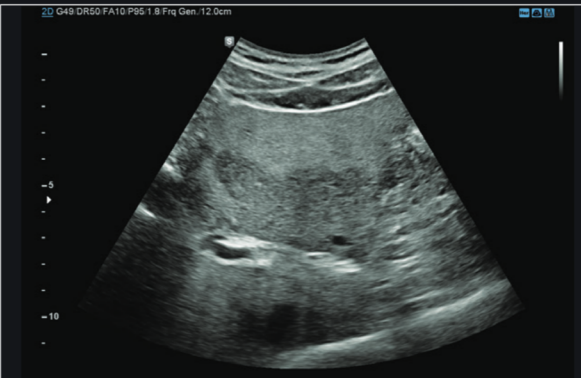


### Exceptional Image Clarity and Color Doppler

The combination of advanced S-Vision Architecture with S-Vue transducer technology delivers exceptional image quality and sensitive color Doppler. Sophisticated wide band design ensures optimal acoustic performance for more confident image assessment.



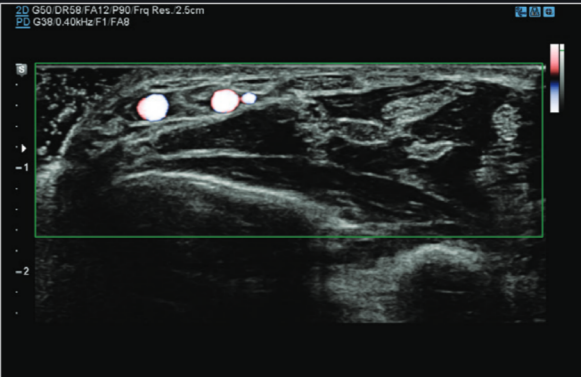
# IMAGE GALLERY



Fatty Liver



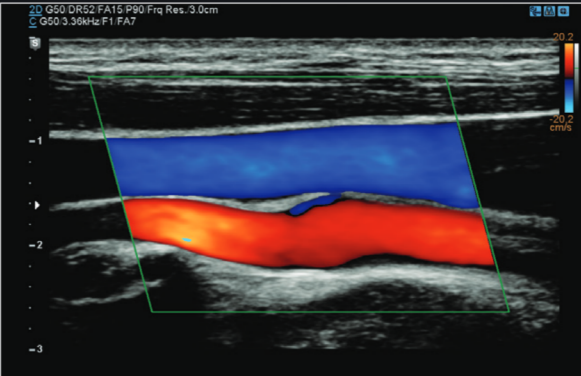
GB Stone



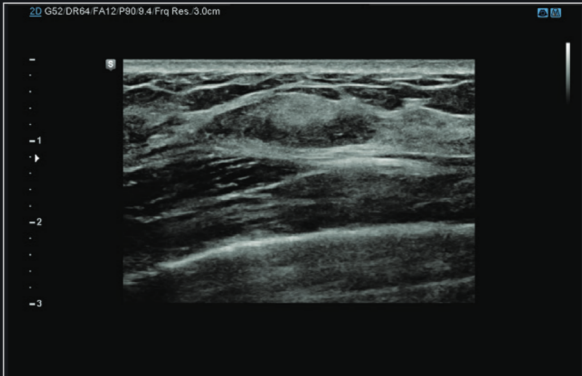
Wrist Vessel



Finger Ganglion



Carotid Artery

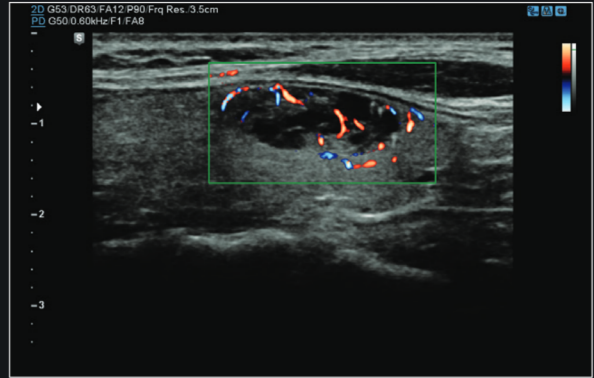


Breast Mass

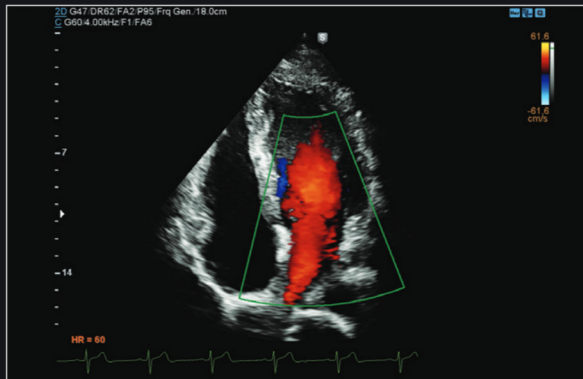




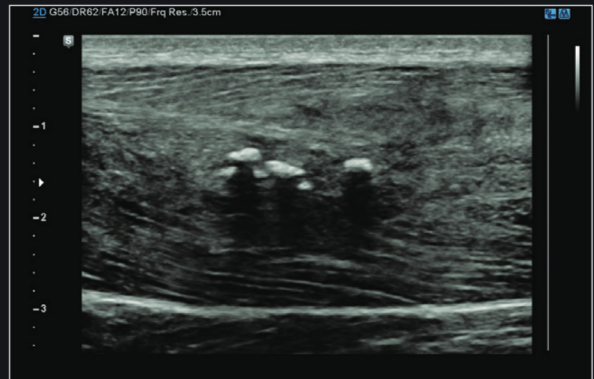
Transverse Right Ovary



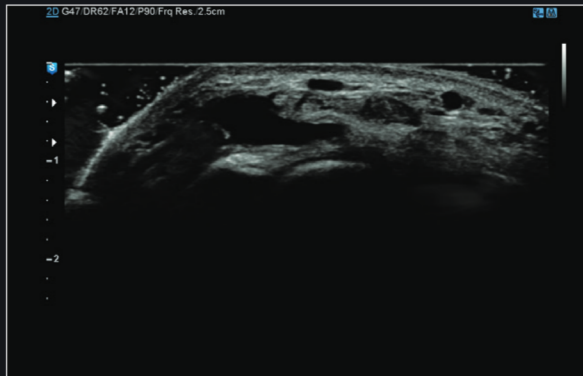
Thyroid Nodule



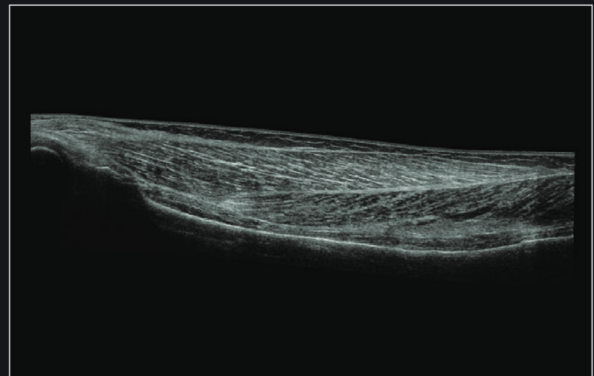
4 Chambers



Quadriceps



Wrist Ganglion



Panoramic

# DESIGNED FOR YOUR CONVENIENCE



## Folding Monitor

The folding monitor enables safe, secure transport in the clinical setting.



## 13.3" Tilting Touch Screen

The tilting touch screen adjusts to accommodate user viewing preference in any scanning environment.



## 6-Way Adjustable Control Panel

The RS80A's 6-way adjustable control panel optimizes the work environment to reduce repetitive stress. Upon power down, the control panel returns to home position for easier mobility.





### 23" LED Display

The RS80A features a 23" full HD LED display, delivering excellent contrast resolution, image clarity and vibrant color in any lighting condition.



### Unique Layout and 3D Navigator

The simplified control panel includes a 3D joystick and intuitive grouping of console buttons, for streamlined system interaction and efficient patient scanning.



### Swivel Lock

A single pedal controls a swivel lock mechanism to conveniently secure the console in place. It also accommodates efficient movement during a variety of scanning procedures.

# COMPREHENSIVE COLLECTION OF TRANSDUCERS

## Curved Array Transducers



### CA1-7A

- Application : Abdomen, OB, Gynecology
- Field of View : 70°



### CA2-8A

- Application : Abdomen, OB, Gynecology
- Field of View : 58°



### CF4-9

- Application : Pediatric, Vascular
- Field of View : 92°

## Linear Array Transducers



### L3-12A

- Application : Small Parts, Vascular, Musculoskeletal
- Footprint : 50mm



### LA3-16A

- Application : Small Parts, Vascular, Musculoskeletal
- Footprint : 40mm



### LA2-9A

- Application : Small Parts, Vascular, Musculoskeletal, Abdomen
- Footprint : 44.16mm



### L7-16

- Application : Small Parts, Vascular, Musculoskeletal
- Footprint : 38.4mm



### LA3-16AI

- Application : Musculoskeletal
- Footprint : 25.6mm

## Volume Transducers



### V5-9

- Application : OB, Gynecology, Urology
- Field of View : 150.6°



### V4-8

- Application : Abdomen, OB, Gynecology
- Field of View : 76°



### LV3-14A

- Application : Musculoskeletal, Small Parts, Vascular
- Footprint : 38.4mm

## Endo-Cavity Transducer



### E3-12A

- Application : OB, Gynecology, Urology
- Field of View : 210°

## Phased Array Transducer



### PM1-6A

- Application : Cardiac, TCD, Abdomen
- Footprint : 22.08mm

## CW Transducer



### CW6.0

- Application : Cardiac
- Center Frequency : 6.0MHz





National Service and Sales Distribution by:



**Sono  
Solutions**  
SEEING GREAT THINGS WITH SOUND

2283 Waynoka Rd  
Ste H  
Colorado Springs, CO 80915  
323-457-3366  
www.sonosolutions.org  
email: sales@sonosolutions.org

