



LOGIQ S8 XDclear 2.0

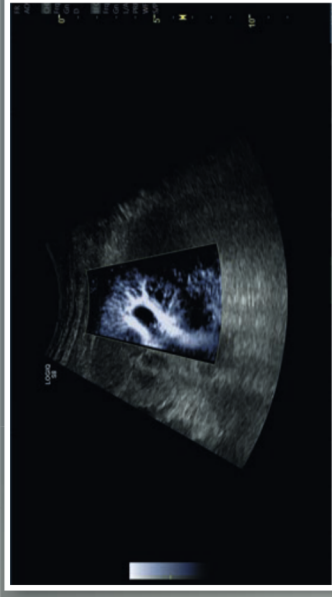
Simply Amazing



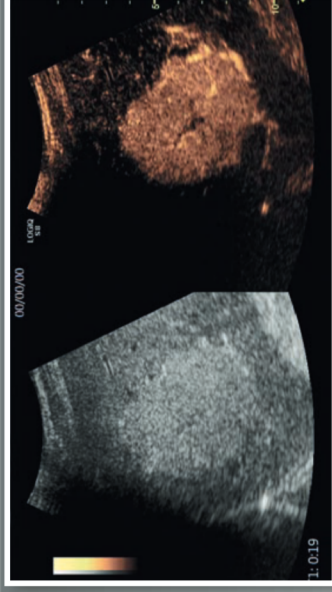


LOGIQ™ S8 XDclear™ 2.0 SUPERB IMAGING

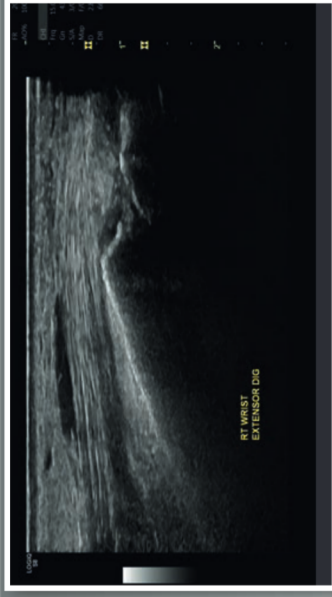
- + Available with FibroScan® technology to aid in the screening, diagnosis, staging, and monitoring of chronic liver disease
- + Enhanced B-Flow™ Imaging – a GE exclusive – with exquisite sensitivity to small vessels
- + Greater portability and a smaller footprint¹ and enhanced Power Assistant option to scan via battery alone for up to one hour
- + Enhanced shared service capability across clinical areas
- + On-board training module to help shorten the operational learning curve



Renal flow imaging using B-Flow Color HD and C1-6-D



Contrast imaging of liver nodule using C1-6-D



Wrist imaging using ML6-15-D

S-Agile Acoustic Architecture

Built on proprietary clinical models of the human body, S-Agile Architecture dynamically optimizes image acquisition for virtually every body type with minimal keystrokes.

XDclear Clarity and Versatility

Harnessing S-Agile Acoustic Architecture and XDclear technology, the system enables superb images across a wide range of applications, including abdominal, musculoskeletal, small parts, breast, vascular, OB/GYN, cardiology, pediatrics and urology. A wide range of E-Series and XDclear probes, which are GE's highest performing probes, are available along with specialty probes.

High-Definition Widescreen Monitor

Advanced OLED technology in our wide-screen monitor provides high contrast and deep blacks, extraordinarily vibrant colors, and excellent image quality.

Enhanced B-Flow Imaging

Enhanced B-Flow Imaging provides enhanced sensitivity to small vessels and slow flow states, and enables side-by-side display of B-Mode and B-Flow images.

SIMPLIFIED WORKFLOW

This portable system easily maneuvers in tight spaces, making it well-suited for crowded rooms. Practical productivity enhancers – from the intuitive keyboard and large touchscreen to built-in automation tools – help reduce the workflow burden on busy staff.



Automated Measurement and Optimization Tools

Streamline exams with user-guided automatic measurements and image optimization tools.

Productivity Packages

Label, measure, and describe anatomy quickly and confidently, plus generate DICOM® SR compatible summaries.

Power Assistant with option for mobile scanning

Scan for up to one hour on battery alone with the new extended battery options.

Scan Assistant

Customizable automation helps reduce keystrokes and exam times. One study demonstrated a 79% reduction in keystrokes and 54% reduction in exam time versus not using Scan Assistant.²

Compare Assistant

Easily view a prior ultrasound, mammography, CT or MR image and current images together in real time via a split screen on the monitor.

GE Raw Data

Helps shorten exam times by enabling users to quickly acquire data and then apply a wide variety of image processing after the exam.

My Trainer

On-board training modules help accelerate operational confidence.





SCALABLE TO YOUR NEEDS

The LOGIQ S8 XDclear 2.0 system gives you access to a wide range of sophisticated optional clinical tools.

FibroScan® technology by Echosens

This non-imaging tool is a reference technology for the management of patients with chronic liver diseases. Its dual function capability provides quantitative measurements of both liver stiffness and attenuation rate to support you across a variety of liver etiologies. Together, LOGIQ S8 XDclear 2.0 and FibroScan provide a powerful and comprehensive clinical resource for screening, diagnosis, staging, and monitoring of liver disease.

Contrast Enhanced Imaging (CEUS)

Optimized contrast agent specific waveforms to enhance the clinician's ability to detect and characterize lesions including advanced quantification tools such as time intensity curve and parametric imaging.

2D Shear Wave Elastography

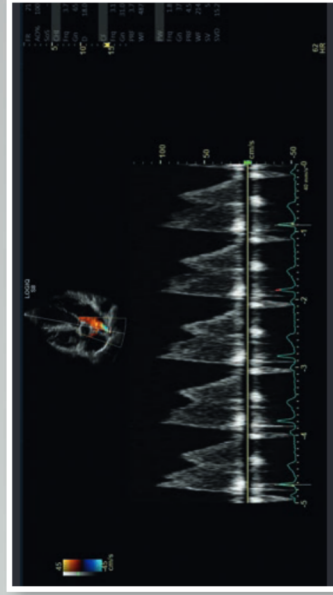
Provides quantitative measures of tissue elasticity and color-coded elastograms to assist clinicians in diagnostic and patient management decisions for both deep and superficial applications.

Volume Navigation

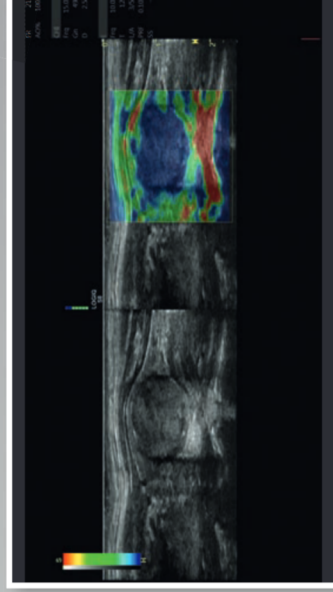
Sophisticated tools combine the advantages of volume imaging with an advanced navigation system to enhance localization speed and accuracy. Needle Tracking techniques and 2D/3D GPS markers help improve confidence and efficacy in treatment planning and guidance.

Designed for Usability

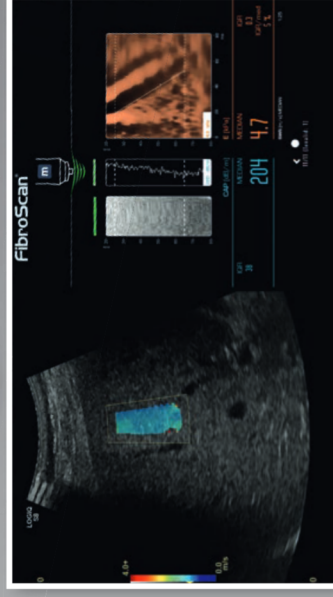
10.1" size flat screen touch panel supports infection control with ease of cleaning. Smaller footprint eases navigation and patient access for portable studies.



Cardiac color and Doppler with M5Sc-D



Thyroid Elastography using ML6-15-D



Dual imaging with C1-6-D Shear Wave Elastography and FibroScan M+ Probe



Educational Opportunities

Continue your professional development through academic classroom training, online tutorials, and workshops. LOGIQ Club offers easy access to best practices from our global customer base.

Service and Financial Solutions

Count on responsive service and support from GE Healthcare that meet your needs for equipment maintenance and service, probe protection and financing.

¹ As compared to the previous version of LOGIQ S8.

² Internal GE Healthcare study performed by third party consultants. The study was conducted using the LOGIQ E9 ultrasound system. The specific numbers refer to a Lower Extremity Venous study.

Imagination at work

www.gehealthcare.com. Product may not be available in all countries and regions. Contact a GE Healthcare Representative for more information. Data subject to change.

© 2017 General Electric Company.

GE, the GE Monogram, imagination at work, LOGIQ, XDclear and B-Flow are trademarks of General Electric Company.

FibroScan technology has been developed by Echoscans and FibroScan is a trademark of Echoscans (www.echosensclinicallibrary.com)

DICOM is a trademark of the National Electrical Manufacturer's Association.

Reproduction in any form is forbidden without prior written permission from GE. Nothing in this material should be used to diagnose or treat any disease or condition. Readers must consult a healthcare professional.