

GE Healthcare

# Voluson S8



Extraordinary vision  
*Signature Series*



# Enhancing your clinical confidence.

The vision that drives your practice – providing excellent care to patients – is the same vision that goes into Voluson<sup>®</sup> ultrasound from GE Healthcare. We're committed to providing you with innovative imaging capabilities so you can make clinical decisions with greater confidence and grow your practice in new directions.

## **Voluson S8** – *Signature Series*

Now, Voluson technology is available in a new family of budget friendly systems, the Signature Series, which enables more clinicians to bring the benefits of this remarkable technology to their patients.





Reflecting GE Healthcare's leadership in women's ultrasound, the Voluson S8 system opens new opportunities in clinical imaging, while also enabling the efficiency and productivity that busy practices demand. Among its advantages:

- Extraordinary image quality – the foundation of Voluson ultrasound – for a clear view into all types of obstetric and gynecologic exams.
- Sophisticated fetal assessment tools to help support earlier, more detailed evaluations.
- Innovative probe technologies to support efficient, thorough evaluations of even the most challenging patients.
- Easy imaging, with system intelligence and probe technology combining to produce outstanding images with minimal user interaction.
- Easy-to-use automation tools and efficiency advancements that will help you streamline workflow, forge stronger connections with patients and referring physicians, and control costs.
- Ergonomic design innovations that simplify how users interact with the system and promotes optimal comfort while scanning.

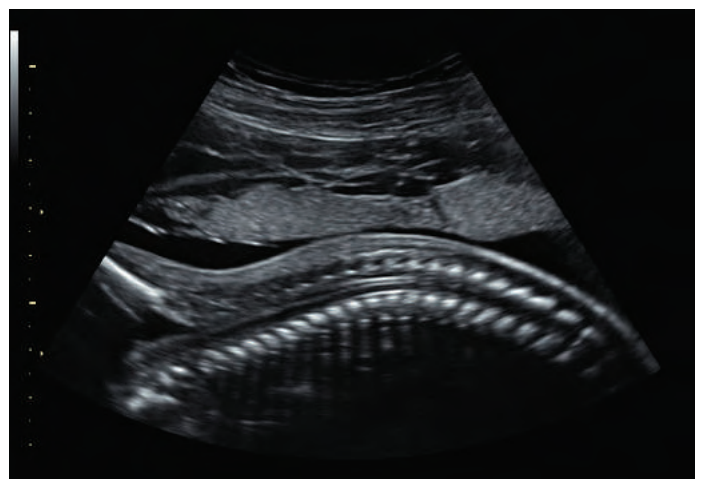
High diagnostic confidence. Superb applications flexibility. Advanced yet budget-friendly technology. And the peace of mind that comes from making Voluson ultrasound part of your practice. The Voluson S8 delivers what you've been looking for in an ultrasound system.



Tools to help you achieve crystal clear images:



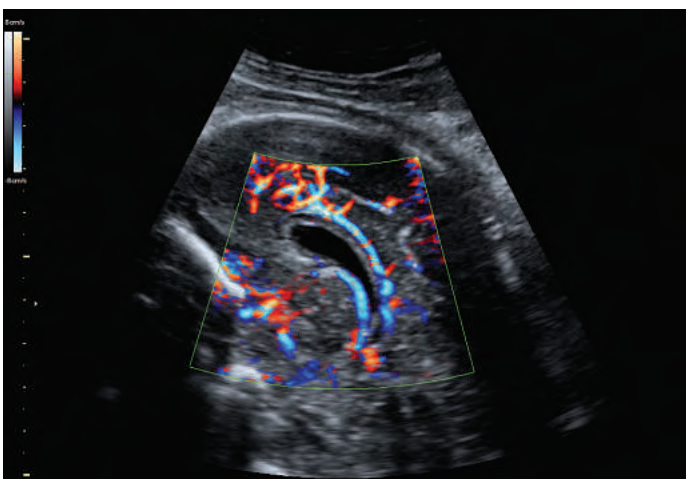
**Advanced SRI** (Speckle Reduction Imaging) helps reduce intrinsic artifacts to improve visualization and contrast resolution.



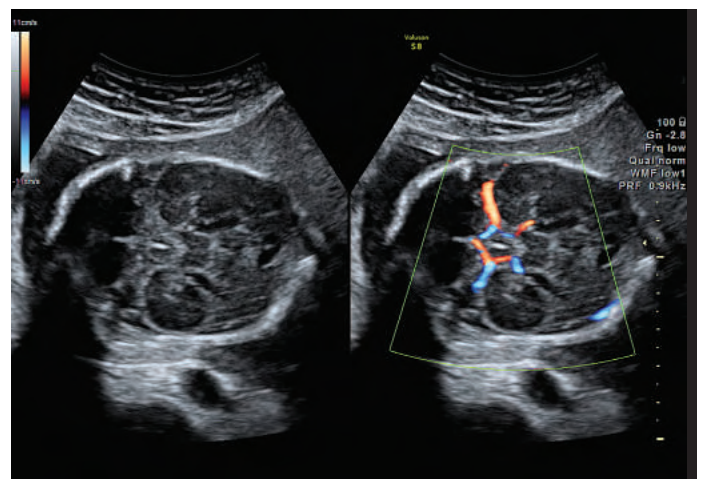
**CrossXBeam<sup>CRIM</sup>** helps enhance tissue interfaces and border differentiation.

# A clear difference in imaging

The clarity of the 2D image quality is stunning, due to technical enhancements of the Voluson platform.



**HD-Flow™** to help improve sensitivity and accuracy for detecting blood flow.



**Dual-view** enables simultaneous visualization of anatomy and blood flow.

Helping you provide excellent patient care

## Powerful tools for fetal assessment

GE Healthcare is a leader in developing ultrasound tools that help provide clinicians with detailed information to support the early health of the developing fetus.

### Early second-trimester evaluations

Sophisticated, yet easy to use, Voluson's capabilities allow you to visualize anatomical information with clarity:

- **Advanced VCI** (Volume Contrast Imaging) helps deliver higher contrast resolution in the acquisition plane, or all three planes of a volume, enabling higher-quality anatomical assessment.
- **SonoNT™** (Sonography-based Nuchal Translucency) is an easy-to-use, semi-automated tool to provide quantifiable NT measurements.
- **HD-Zoom** capabilities help users localize regions of interest for closer study.
- **TUI** (Tomographic Ultrasound Imaging) helps simplify analysis and documentation of dynamic studies with a simultaneous view of multiple parallel slices of a volume data set.

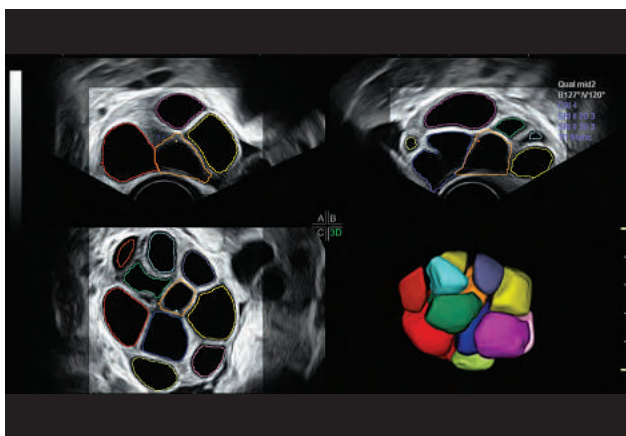
### Fetal cardiac assessment

The Voluson S8 system facilitates more detailed fetal cardiac assessment with a suite of advanced fetal echo imaging technologies:

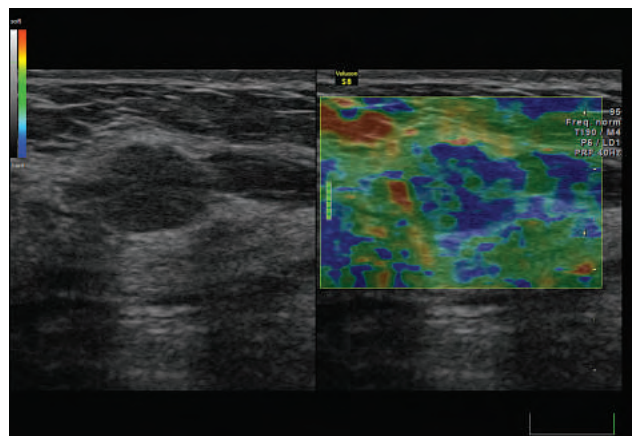
- **STIC** (Spatio-Temporal Image Correlation) enables detailed three-dimensional images of the heart that can be viewed in motion. Clinicians can visualize an entire fetal heart cycle – information that can help improve detection of heart defects with confidence.
- **Anatomical M-Mode** helps improve accuracy of arrhythmia assessments and cardiac measurements.
- **SonoVCAD™*heart*** (Sonography-based Volume Computer Aided Display *heart*) helps streamline the acquisition of volumetric images of the fetal heart, displaying all six recommended views from a single volume, helping clinicians conduct comprehensive exams.

## Performing complex procedures

The Voluson S8 system provides the sophisticated imaging capabilities that clinicians require for complex diagnostic work-ups and the demands of reproductive medicine, including:



Follicle volume measurement during ovarian stimulation using **SonoAVC*follicle***.



**Elastography** to help achieve highly-detailed information about internal tissue structures during breast and gynecologic evaluations.

## Advanced probe technology

Probes are critical to the quality and speed of exams, and to the clinician's diagnostic confidence. The Voluson S8 supports a wide range of advanced 2D and 3D probes whose technology enables high quality images with exceptional reliability. System intelligence and probe technology combine to produce outstanding image quality with minimal user interaction – just place the probe and scan with confidence.



# Take the work out of workflow

The more your ultrasound system can do, the more efficient and consistent your patient studies can be.

The Voluson S8 system has a host of automated tools that help streamline complicated exams, ensure reproducibility of results, and keep your schedule on track. You can expect fewer keystrokes, greater responsiveness, and a higher degree of automation, enabling you to concentrate on the patient rather than system operation.

## Greater clinical efficiency and confidence

Tools like SonoNT and SonoVCAD*heart* help the efficiency of fetal imaging. additional tools include:

- **SonoAVC™ follicle** (Sonography-based Automated Volume Count *follicle*) automatically calculates the number and volume of hypoechoic structures to help speed follicular assessments.
- **SonoVCAD*labor*** helps monitor and document the labor procedure to help evaluate second-stage labor progression.
- **SonoRender Start** enables the user to quickly optimize volume rendering with the touch of a single button.

## Tools that help users work smarter

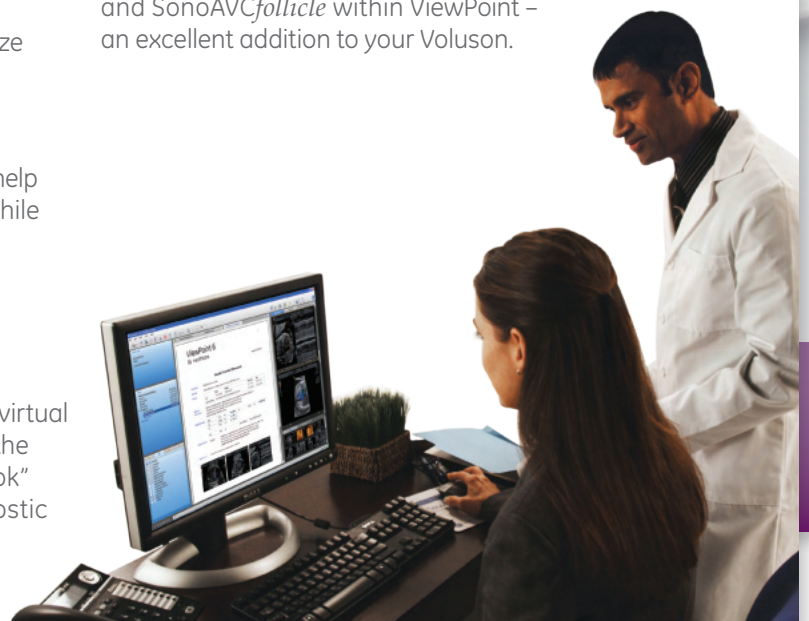
The Voluson S8 system provides easy-to-use tools that help busy departments and practices improve workflow while helping ensure exam consistency.

- **Scan Assistant** – customizable and user-friendly tool that helps improve quality assurance, increase exam consistency and enhances productivity.
- **Raw Data.** The ability to capture raw data allows a virtual rescan of the patient at any time after the study, on the system or at a remote workstation. This “second look” can help increase productivity and improve diagnostic confidence.

## Streamlined archiving and reporting

- **Streamlined archiving and reporting** – The Voluson S8 is DICOM™ compliant and is compatible with many electronic medical record (EMR) systems. This connectivity allows you to organize and archive patient data efficiently and helps you stay compliant with growing patient data regulations.
- **ViewPoint reporting and image management** provides customizable templates for 1st trimester, 2nd/3rd trimester, and gynecology exams, allowing you to create clearly structured reports, including images, and graphs. Go paperless with digital measurement transfer, image management, and record storage, helping your practice save time and cost.

The image management module features the integrated 4D View program, allowing you to utilize Voluson's automated technologies like SonoVCAD*heart* and SonoAVC*follicle* within ViewPoint – an excellent addition to your Voluson.





+ 19-inch, flat-screen LCD monitor. The large, high-resolution monitor helps increase visibility and reduce eye fatigue. The monitor moves independently of the console.

+ Superb ergonomics. The Voluson Signature Series follows the Society of Diagnostic Medical Sonographers (SDMS) ergonomic guidelines.

+ Scan in comfort. Console height adjusts and keyboard rotates to user preference.

+ Simplified workflow. With fewer controls, exams can be completed with a reduced number of keystrokes and manipulations.

+ Compact and mobile. The sleek, lightweight console is easy to transport. Its small footprint slides under beds and makes optimal use of small spaces.

+ Probe protection. The thoughtful design of the probe holder helps protect delicate transducers while positioning them for optimal convenience.

+ Wireless connectivity helps user manage patient information, report data, and send images easily.

+ Integrated peripherals reduce clutter and easy-to-access USB ports expand functionality.



Voluson helps provide exceptional user comfort and productivity.

# At your service – throughout the relationship

With the Voluson S8 system, you can count on responsive service and support from GE Healthcare. We know that a long-term relationship depends on providing you with technologies and programs that truly meet your needs for equipment maintenance and service, probe protection, and financing.

- + Online remote support.** InSite™ Remote Diagnostics helps you maintain high uptime by seamlessly integrating your ultrasound system with the GE digital services network. When you report a problem, GE engineers begin evaluating your system online within minutes via a secure connection. Often they can identify and resolve technical issues remotely to maximize equipment availability.
- + Financing options.** GE offers an array of financing options through GE Capital, Healthcare Financial Services (HFS). Whether you are looking to lease or own, HFS has a wide range of lease and loan programs which can be tailored to fit your individual cashflow needs.
- + Responsive on-site service.** GE Healthcare field engineers bring exceptional technical skills, advanced tools for performance optimization and personal dedication to supporting your equipment. We will provide preventive maintenance and service as needed to help ensure optimal system performance day after day.
- + Probe protection.** Our probes programs offers peace of mind that your probes are protected and can be exchanged in the event including specified probes – in one cost-effective package.



## Extraordinary vision for the environment. Everyday savings for you.

Voluson ultrasound systems are among the most energy efficient in the industry. That means with every image you will save time, reduce costs, and preserve the environment.

- Voluson Signature Series systems consume fewer kWh of electricity per year for the same number of scans\*, a real savings for you.
- The Voluson Signature Series imaging platform and high-resolution probes work together to help reduce scan time\*\*, creating the potential to scan more patients per day.
- By enabling digital archiving, the DICOM-based Voluson Signature Series can help most hospitals reduce ultrasound paper usage per machine\*\*, taking cost out of your budget.

It's part of the GE commitment to invest in innovative solutions to environmental challenges while empowering you with advanced tools for healthcare delivery.

\* Compared to prior GE cart-based ultrasound technology

\*\*Compared to analog ultrasound technology

**+ Education and training.** GE offers courses at either a GE education facility, or at an on-site location to suit your practice needs. Instruction includes in-depth technology review of image optimization and customization, 3D and 4D techniques, volume manipulations and advanced 3D/4D tools and applications. Highlights include technical and clinical lectures as well as focused hands-on scanning under the supervision of product experts.

**+ VolusonClub** is an online community of over 10,000 Voluson users that can help you experience the full diagnostic power of your Voluson ultrasound. Inside VolusonClub you will have access to a collection of tools and resources only available to members.

These materials can help you enhance your knowledge of system operation, and learn techniques to help you improve your productivity. Interact with other Voluson users, receive communications, and access a wide library of Voluson specific materials.

Joining is easy, visit [www.volusonclub.net](http://www.volusonclub.net).

©2011 General Electric Company – All rights reserved.

General Electric Company reserves the right to make changes in specifications and features shown herein, or discontinue the product described at any time without notice or obligation. Contact your GE Representative for the most current information.

GE, GE Monogram, Voluson, CrossXBeam<sup>SM</sup>, HD-Flow, SonoVCAD, SonoAVC, SonoNT and InSite are trademarks of General Electric Company.

DICOM is a registered mark of the National Electrical Manufacturers Association.

GE Medical Systems Ultrasound & Primary Care Diagnostics, LLC, a General Electric company, doing business as GE Healthcare.

## About GE Healthcare

GE Healthcare provides transformational medical technologies and services that are shaping a new age of patient care. Our broad expertise in medical imaging and information technologies, medical diagnostics, patient monitoring systems, drug discovery, biopharmaceutical manufacturing technologies, performance improvement and performance solutions services help our customers to deliver better care to more people around the world at a lower cost. In addition, we partner with healthcare leaders, striving to leverage the global policy change necessary to implement a successful shift to sustainable healthcare systems.

Our “healthymagination” vision for the future invites the world to join us on our journey as we continuously develop innovations focused on reducing costs, increasing access and improving quality around the world. Headquartered in the United Kingdom, GE Healthcare is a unit of General Electric Company (NYSE: GE). Worldwide, GE Healthcare employees are committed to serving healthcare professionals and their patients in more than 100 countries. For more information about GE Healthcare, visit our website at [www.voluson.gehealthcare.com](http://www.voluson.gehealthcare.com).

### UNITED KINGDOM

GE Medical Systems Ultrasound  
71 Great North Road  
Hatfield  
Hertfordshire  
AL9 5EN  
T 44 1707 263570  
F 44 1707 260065

### EUROPE

GE Healthcare GmbH  
Beethovenstr. 239,  
42655 Solingen  
Germany  
T 49 212-28 02-0  
F 49 212-28 02 28

### AMERICAS

GE Healthcare  
9900 Innovation Drive  
Wauwatosa,  
WI 53226  
U.S.A.  
T 1 888 202 5582

### ASIA

GE Healthcare  
Clinical Systems ASIA  
1105-1108 Maxdo Center  
8 XingYi Road,  
Shanghai, 200336  
T 86 21 5257 4640  
F 86 21 5208 0582



GE imagination at work

ecomagination<sup>SM</sup>

healthymagination